



Company Profile

Flexible Couplings / Clamp Power Locks

MINI MECHANICAL SYSTEM

Since 1994



www.tsd.com.tw

Flexible Couplings

Clamp Power Locks

Mini Stage Series

XYθ Mechanical Stage



MFC P04 / P05



MFC-C P06 / P07



MFS P08 / P09



MFS-C P10 / P11

CONTENTS

Flexible Couplings



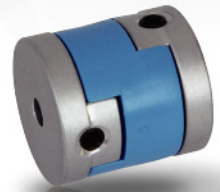
MFX P12 / P13



MFX-C P14 / P15



MFB P16 / P17



MFL P18 / P19



MFL-C P20 / P21



MPS-C P22 / P23



MFR P24 / P25



MFR-C P26 / P27



MHC-C P28 / P29



MHS-C P30 / P31



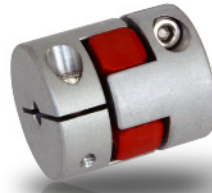
XHCA-C P32 / P33



XHSA-C P34 / P35



MTC P36 / P37



MTC-C P38 / P39



MSA P40 / P41



MSA-C P42 / P43



MRC-C P44 / P45



WTM-type P46 / P47

Clamp Power Lock



GSA P50 / P51



GSB P52 / P53



GSC P54 / P55



GSD P56 / P57



GSK/GSMA
P58 / P59



GSDS P60 / P61



GSES P62 / P63



GSF P64 / P65

大山惇企業有限公司成立 Ta Sun Good enterprise Co.,Ltd.was established. 1994

1994 TSD 商標註冊使用 TSD registration of trademark use.

1995 生產銷售聯軸器、精密滑台 Production and sales of coupling, precision stage table

ISO 9001:2000 導入推行 ISO 9001:2000 Lead-in item. 2007

ISO 9001:2000 設計、製造雙認證通過 ISO 9001:2000 The design, makes the double authentication to pass. 2008

2008 產品 Rohs 環保認證通過 The product Rohs environmental protection authentication passes.

ISO 9001:2008 設計、製造雙認證通過 ISO 9001:2008 The design, makes the double authentication to pass. 2011

關於大山惇 / About TSD

TSD (大山惇) 成立於 1994 年，以精密機械元件加工為發展基礎，進而自創品牌，成為專業機械傳動組 (Flexible Couplings) 及精密滑台 (mini stage, servo table) 製造商，提供各式自動化機械設備精密定位與準確傳動的需求。以誠信、迅速、負責，踏實經營理念和海內外客戶一同成長茁壯。

TSD was founded in 1994, to precision mechanical components machining for the Foundation for development and their own brand names, become professional mechanical transmission group (Flexible Couplings) and precision slipway (mini stage, servo table) manufacturer, offering a range of automated machinery and equipment for precision positioning and accurate transmission needs. To be honest-fast-charge-solid business concept and customers grow together.

品牌意義 / Meaning of the brand

源自於公司名稱 TA SUN GOOD 的縮寫。涵意於，每天清晨「大地都被溫暖太陽光所擁抱甦醒、包圍著幸福一天的開始」，的願望。意期客戶使用 TSD 系列產品而創造，新價值、新競爭力，成為市場贏家；也期許 TSD 成為創新科技、創造共贏的市場贏家。

The name derives from the company TA SUN GOOD abbreviation. The implicit meaning to, every morning (Earth are warm sun embrace wakes up, surrounded by happy day ", wishes. Italian period customers use TSD products and create new value, new competition, becoming the market winner; also hopes TSD into an innovation and technology, creating a win-win market winners.

品質政策 / Quality policy

ISO9001:2008

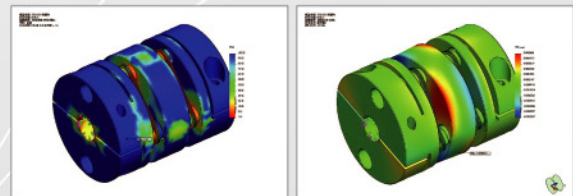


ISO9001-2008 大山惇

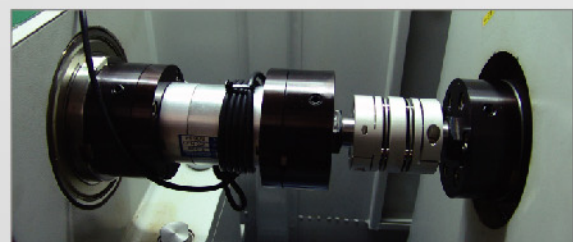


ISO9001-2008 山騰

有限元素分析 / FEA Simulation



扭矩 / 疲勞測試機 Torque / Fatigue test machine



Flexible Couplings

聯軸器系列



MFC / MFCS



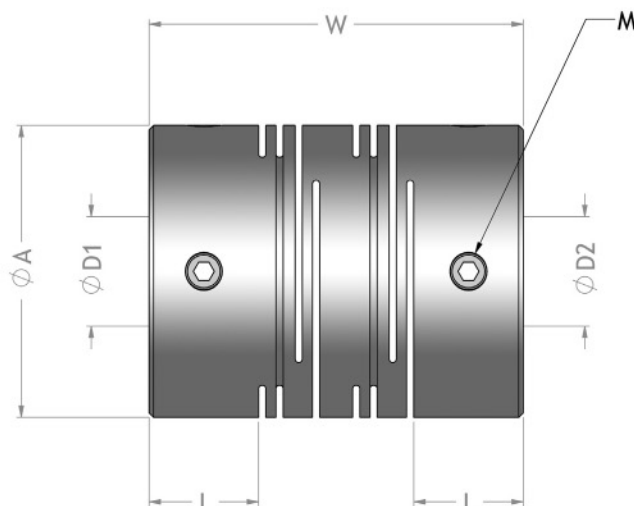
Features

- One-piece metallic spring coupling.
- Zero backlash.
- Complete absorption of eccentricity angularity, and end-play by spring action.
- High torsion stiffness and response.
- Identical clockwise and counter-clockwise rotational characteristics.
- Maintenance-free, oil and chemical resistant.
- Setscrew type.
- MFC Body : Extra Super Duralumin.
- MFCS Body : Stainless steel.

特性

- 一體狹縫切割型金屬撓性聯軸器。
- 零作用力。
- 藉由彈性作用，完美吸收軸偏移，角偏差，軸端部位差。
- 高扭力，高負荷。
- 順、逆時針迴轉特性完全相同。
- 免保養，抗油，抗化學性。
- 止付螺絲型固定。
- MFC 本體：鋁合金材質。
- MFCS 本體：不銹鋼材質。

Setscrew type



Specifications

unit : mm

Product No 產品名稱	Rated Torque 常用扭矩 (N.m)	Max. Torque 最大扭矩 (N.m)	Max. Rotational Frequency 最高迴轉數 (min ⁻¹)	Moment* Of Inertia 慣性 (kg.m ²)	Error of Eccentricity 容許偏心量 (mm)	Error of Angularity 容許角偏差 (°)	Error of Shaft End-play 容許軸向偏差 (mm)	Mass** 質量 (g)
MFC-16	0.3	0.6	24000	3.4x10 ⁻⁷	0.10	2°	±0.4	8.2
MFC-20	0.5	1.0	19000	8.6x10 ⁻⁷	0.10	2°	±0.4	15.0
MFC-25	1.1	2.2	15000	2.2x10 ⁻⁶	0.15	2°	±0.5	28.0
MFC-32	2.0	4.0	12000	9.0x10 ⁻⁶	0.15	2°	±0.5	63.0
MFC-40	5.0	10.0	9600	2.8x10 ⁻⁵	0.20	2°	±0.5	128.0
MFC-50	10.0	20.0	7700	1.1x10 ⁻⁴	0.20	2°	±0.5	250.0
MFCS-16	0.5	1.0	24000	8.6x10 ⁻⁷	0.10	2°	±0.3	23.0
MFCS-20	1.0	2.0	19000	2.4x10 ⁻⁶	0.10	2°	±0.3	40.0
MFCS-25	2.1	4.2	15000	7.2x10 ⁻⁶	0.15	2°	±0.4	80.0
MFCS-32	3.5	7.0	12000	2.6x10 ⁻⁵	0.15	2°	±0.5	170.0

> Ma x. Bore Moment of Inertia / 最大孔徑時慣性矩

> Max. Bore Mass / 最大孔徑時質量

Dimension

unit : mm

Product No 產品名稱	A	L	W	Stock Bores 標準孔徑 D1xD2(公差 H8)		M
				Min D1	Max D2	
MFC-16	16	6.5	23	4	8	4-M3
MFC-20	20	7.5	26	5	10	4-M3
MFC-25	25	8.5	31	5	12	4-M4
MFC-32	32	12	41	6	14	4-M4
MFC-40	40	17	56	8	16	4-M5
MFC-50	50	21	71	10	18	4-M6
MFCS-16	16	6.5	23	4	8	4-M3
MFCS-20	20	7.5	26	5	10	4-M3
MFCS-25	25	8.5	31	5	12	4-M4
MFCS-32	32	12	41	6	14	4-M4

When Ordering

請依照型錄所制訂的產品規格訂購，兩側孔徑可依客戶需在規範內加工製作。

When placing an order, make sure to include product no.

And stock bores (both sides) of product.

MFC - 32 - ø 8 x ø 12

Product No D1 x D2

MFC-C / MFCS-C



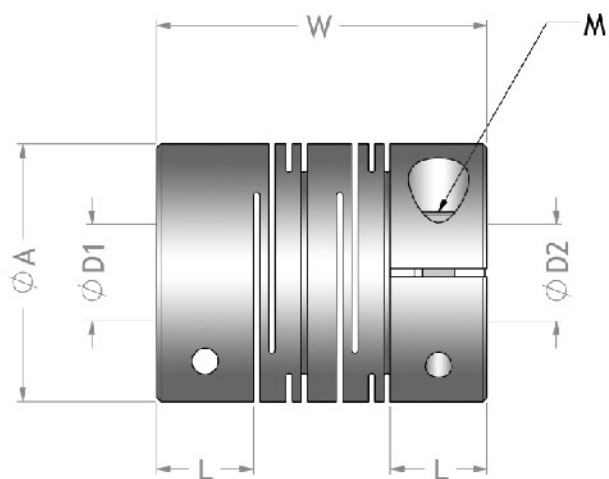
Features

- One-piece metallic spring coupling.
- Zero backlash.
- Complete absorption of eccentricity angularity, and end-play by spring action.
- High torsion stiffness and response.
- Identical clockwise and counter-clockwise rotational characteristics.
- Maintenance-free, oil and chemical resistant.
- Clamp type.
- MFC-C Body : Extra Super Duralumin.
- MFCS-C Body : Stainless steel.

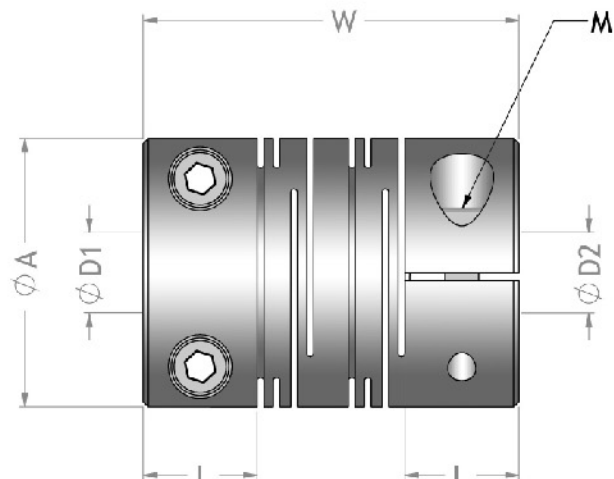
特性

- 一體狹縫切割型金屬撓性聯軸器。
- 零作用力。
- 藉由彈性作用，完美吸收軸偏移，角偏差，軸端部位差。
- 高扭力，高負荷。
- 順、逆時針迴轉特性完全相同。
- 免保養，抗油，抗化學性。
- 夾鉗螺絲型固定。
- MFC-C 本體：鋁合金材質。
- MFCS-C 本體：不銹鋼材質。

Clamp type



MFCS-C



MFC-C

Specifications

unit : mm

Product No 產品名稱	Rated Torque 常用扭矩 (N.m)	Max. Torque 最大扭矩 (N.m)	Max. Rotational Frequency 最高迴轉數 (min ⁻¹)	Moment* Of Inertia 慣性 (kg.m ²)	Error of Eccentricity 容許偏心量 (mm)	Error of Angularity 容許角偏差 (°)	Error of Shaft End-play 容許軸向偏差 (mm)	Mass** 質量 (g)
MFC-16C	0.3	0.6	9500	3.5x10 ⁻⁷	0.10	2°	±0.4	9.1
MFC-20C	0.5	1.0	7600	8.7x10 ⁻⁷	0.10	2°	±0.4	16.5
MFC-25C	1.1	2.2	6100	2.2x10 ⁻⁶	0.15	2°	±0.5	29.0
MFC-32C	2.0	4.0	4800	9.1x10 ⁻⁵	0.15	2°	±0.5	67.0
MFC-40C	5.0	10.0	3800	2.9x10 ⁻⁴	0.20	2°	±0.5	138.0
MFC-50C	10.0	20.0	3100	1.3x10 ⁻⁴	0.20	2°	±0.5	260.0
MFCS-16C	0.5	1.0	9500	9.2x10 ⁻⁷	0.10	2°	±0.3	27.0
MFCS-20C	1.0	2.0	7600	2.5x10 ⁻⁶	0.10	2°	±0.3	45.0
MFCS-25C	2.1	4.2	6100	7.4x10 ⁻⁶	0.15	2°	±0.4	87.0
MFCS-32C	3.5	7.0	4800	2.7x10 ⁻⁵	0.15	2°	±0.5	180.0

> Ma x. Bore Moment of Inertia / 最大孔徑時慣性矩

> Max. Bore Mass / 最大孔徑時質量

Dimension

unit : mm

Product No 產品名稱	A	L	W	Stock Bores 標準孔徑 D1xD2(公差 H8)		M
				Min D1	Max D2	
MFC-16C	16	6.5	23	5	6	4-M2.5
MFC-20C	20	7.5	26	5	8	4-M2.5
MFC-25C	25	8.5	31	5	10	4-M3
MFC-32C	32	12	41	6	14	4-M4
MFC-40C	40	17	56	8	16	4-M5
MFC-50C	50	21	71	12	18	4-M6
MFCS-16C	16	6.5	23	5	6	2-M2.5
MFCS-20C	20	7.5	26	5	8	2-M2.5
MFCS-25C	25	8.5	31	5	10	2-M3
MFCS-32C	32	12	41	6	14	2-M4

When Ordering

請依照型錄所制訂的產品規格訂購，兩側孔徑可依客戶需在規範內加工製作。

When placing an order, make sure to include product no.

And stock bores (both sides) of product.

MFC - 25C - ø6 x ø6

Product No D1 x D2

MFS / MFSS



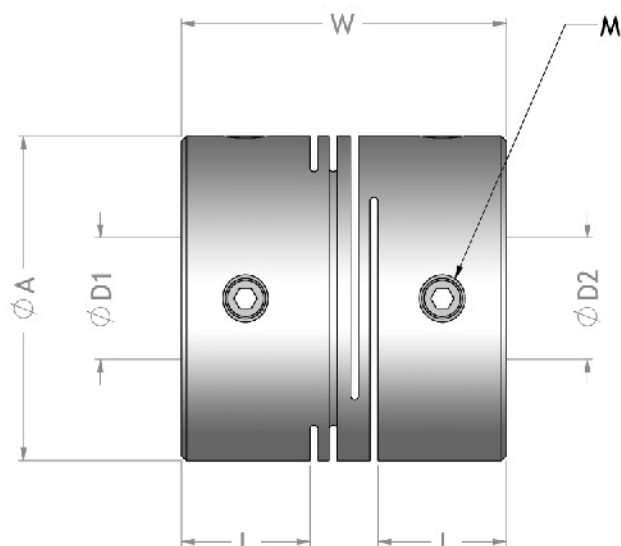
Features

- One-piece metallic spring coupling.
- Zero backlash.
- Complete absorption of eccentricity angularity, and end-play by spring action.
- High torsion stiffness and response.
- Identical clockwise and counter-clockwise rotational characteristics.
- Maintenance-free, oil and chemical resistant.
- Setscrew type.
- MFS Body : Extra Super Duralumin.
- MFSS Body : Stainless steel.

特性

- 一體狹縫切割型金屬撓性聯軸器。
- 零作用力。
- 藉由彈性作用，完美吸收軸偏移，角偏差，軸端部位差。
- 高扭力，高負荷。
- 順、逆時針迴轉特性完全相同。
- 免保養，抗油，抗化學性。
- 止付螺絲型固定。
- MFS 本體：鋁合金材質。
- MFSS 本體：不銹鋼材質。

Setscrew type



Specifications

unit : mm

Product No 產品名稱	Rated Torque 常用扭矩 (N.m)	Max. Torque 最大扭矩 (N.m)	Max. Rotational Frequency 最高迴轉數 (min ⁻¹)	Moment* Of Inertia 慣性 (kg.m ²)	Error of Angularity 容許角偏差 (°)	Error of Shaft End-play 容許軸向偏差 (mm)	Mass** 質量 (g)
MFS-16	0.3	0.6	24000	2.7x10 ⁻⁷	1°	±0.2	7.4
MFS-20	0.5	1.0	19000	7.6x10 ⁻⁷	1°	±0.2	12.0
MFS-25	1.1	2.2	15000	2.2x10 ⁻⁶	1°	±0.2	24.0
MFS-32	2.0	4.0	12000	8.0x10 ⁻⁶	1°	±0.2	50.0
MFS-40	5.0	10.0	9600	2.8x10 ⁻⁵	1°	±0.3	98.0
MFSS-16	0.5	1.0	24000	8.6x10 ⁻⁷	1°	±0.1	18.0
MFSS-20	1.0	2.0	19000	2.4x10 ⁻⁶	1°	±0.1	32.0
MFSS-25	2.1	4.2	15000	7.2x10 ⁻⁶	1°	±0.2	63.0
MFSS-32	3.5	7.0	12000	2.6x10 ⁻⁵	1°	±0.2	130.0

> Ma x. Bore Moment of Inertia / 最大孔徑時慣性矩

> Max. Bore Mass / 最大孔徑時質量

Dimension

unit : mm

Product No 產品名稱	A	L	W	Stock Bores 標準孔徑 D1xD2(公差 H8)		M
				Min D1	Max D2	
MFS-16	16	6.8	18	4	8	4-M3
MFS-20	20	7.6	20	5	10	4-M3
MFS-25	25	9.5	25	5	12	4-M4
MFS-32	32	12.6	32	6	14	4-M4
MFS-40	40	15.8	40	8	18	4-M5
MFSS-16	16	6.8	18	4	8	4-M3
MFSS-20	20	7.6	20	5	10	4-M3
MFSS-25	25	9.5	25	5	12	4-M4
MFSS-32	32	12.6	32	6	14	4-M4

When Ordering

請依照型錄所制訂的產品規格訂購，兩側孔徑可依客戶需在規範內加工製作。

When placing an order, make sure to include product no.

And stock bores (both sides) of product.

MFS - 20 - ø5 x ø6

Product No D1 x D2

MFS-C / MFSS-C



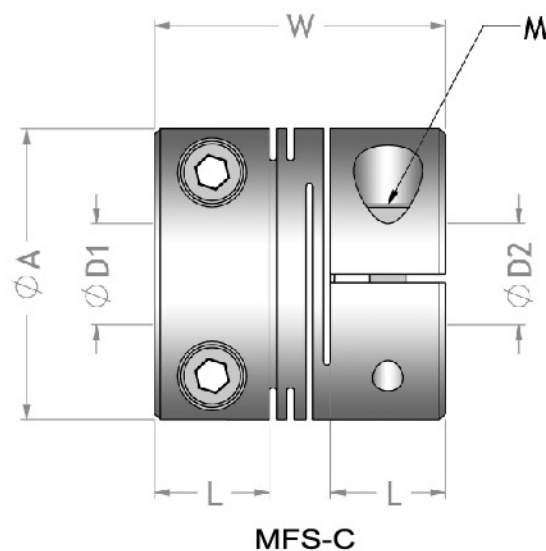
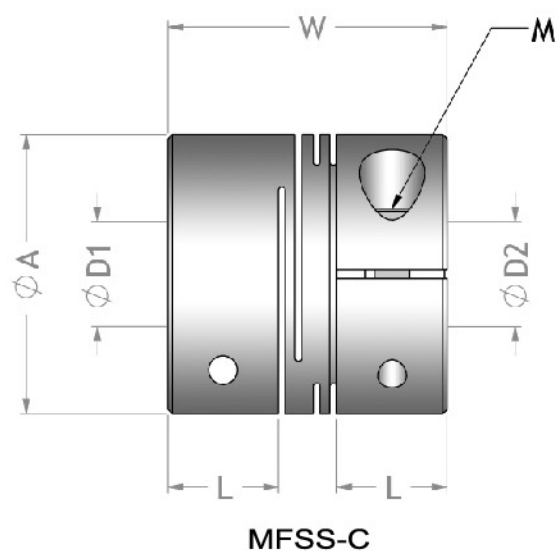
Features

- One-piece metallic spring coupling.
- Zero backlash.
- Complete absorption of eccentricity angularity, and end-play by spring action.
- High torsion stiffness and response.
- Identical clockwise and counter-clockwise rotational characteristics.
- Maintenance-free, oil and chemical resistant.
- Clamp type.
- MFS-C Body : Extra Super Duralumin.
- MFSS-C Body : Stainless steel.

特性

- 一體狹縫切割型金屬撓性聯軸器。
- 零作用力。
- 藉由彈性作用，完美吸收軸偏移，角偏差，軸端部位差。
- 高扭力，高負荷。
- 順、逆時針迴轉特性完全相同。
- 免保養，抗油，抗化學性。
- 夾鉗螺絲型固定。
- MFS-C 本體：鋁合金材質。
- MFSS-C 本體：不銹鋼材質。

Clamp type



Specifications

unit : mm

Product No 產品名稱	Rated Torque 常用扭矩 (N.m)	Max. Torque 最大扭矩 (N.m)	Max. Rotational Frequency 最高迴轉數 (min ⁻¹)	Moment* Of Inertia 慣性 (kg.m ²)	Error of Angularity 容許角偏差 (°)	Error of Shaft End-play 容許軸向偏差 (mm)	Mass** 質量 (g)
MFS-16C	0.3	0.6	9500	2.8x10 ⁻⁷	1°	±0.2	8.1
MFS-20C	0.5	1.0	7600	7.5x10 ⁻⁷	1°	±0.2	13.0
MFS-25C	1.1	2.2	6100	2.2x10 ⁻⁶	1°	±0.2	25.0
MFS-32C	2.0	4.0	4800	8.1x10 ⁻⁶	1°	±0.2	53.0
MFS-40C	5.0	10.0	3800	1.9x10 ⁻⁵	1°	±0.3	110.0
MFSS-16C	0.5	1.0	9500	7.8x10 ⁻⁷	1°	±0.1	21.0
MFSS-20C	1.0	2.0	7600	2.1x10 ⁻⁶	1°	±0.1	36.0
MFSS-25C	2.1	4.2	6100	6.3x10 ⁻⁶	1°	±0.2	70.0
MFSS-32C	3.5	7.0	4800	2.2x10 ⁻⁵	1°	±0.2	150.0

> Ma x. Bore Moment of Inertia / 最大孔徑時慣性矩

> Max. Bore Mass / 最大孔徑時質量

Dimension

unit : mm

Product No 產品名稱	A	L	W	Stock Bores 標準孔徑 D1xD2(公差 H8)		M
				Min D1	Max D2	
MFS-16C	16	6.8	18	5	6	4-M2.5
MFS-20C	20	7.6	20	5	8	4-M2.5
MFS-25C	25	9.5	25	5	10	4-M3
MFS-32C	32	12.6	32	8	14	4-M4
MFS-40C	40	15.8	40	8	16	4-M5
MFSS-16C	16	6.8	18	5	6	2-M2.5
MFSS-20C	20	7.6	20	5	8	2-M2.5
MFSS-25C	25	9.5	25	5	10	2-M3
MFSS-32C	32	12.6	32	8	14	2-M4

When Ordering

請依照型錄所制訂的產品規格訂購，兩側孔徑可依客戶需在規範內加工製作。

When placing an order, make sure to include product no.

And stock bores (both sides) of product.

MFS - 25C - ø 6 x ø 10

Product No D1 x D2

MFX



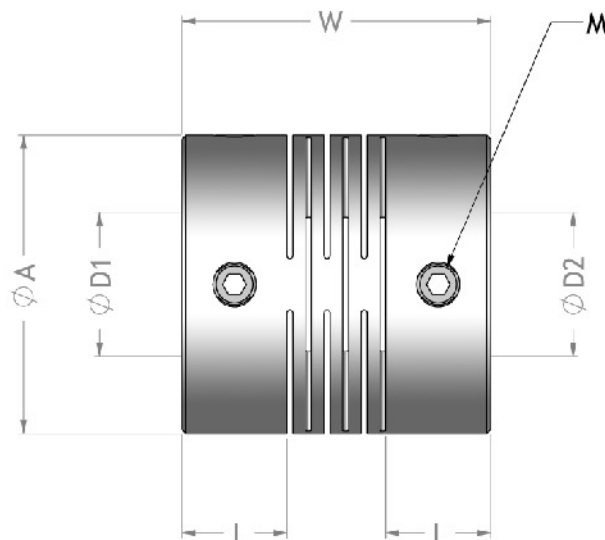
Features

- One-piece metallic spring coupling.
- Extremely high torsional stiffness, low inertia and excellent response.
- Absorption of parallel, angular misalignments and shaft endplay by spring action.
- Identical clockwise and counter-clockwise rotational characteristics.
- Finished products featuring two different end bore diameters available in stock.
- Setscrew type.
- MFX Body : Extra Super Duralumin.

特性

- 一體狹縫切割型金屬撓性聯軸器。
- 超高扭轉剛性，低慣性和卓越的應答度。
- 狹縫切割構成的彈簧板，可容許偏心、偏角及軸向偏差。
- 順、逆時針迴轉特性完全相同。
- 兩端不同孔徑的產品標準化。
- 止付螺絲型固定。
- MFX 本體：鋁合金材質。

Setscrew type



Specifications

unit : mm

Product No 產品名稱	Rated Torque 常用扭矩 (N.m)	Max. Torque 最大扭矩 (N.m)	Max. Rotational Frequency 最高迴轉數 (min ⁻¹)	Moment* Of Inertia 慣性 (kg.m ²)	Error of Eccentricity 容許偏心率 (mm)	Error of Angularity 容許角偏差 (°)	Error of Shaft End-play 容許軸向偏差 (mm)	Mass** 質量 (g)
MFX-16	0.5	1	39000	2.8X10 ⁻⁷	0.05	0.5°	±0.1	7
MFX-19	1	2	33000	6.2X10 ⁻⁷	0.05	0.5°	±0.1	11
MFX-24	1.5	3	26000	2.0X10 ⁻⁶	0.05	0.5°	±0.1	23
MFX-29	2	4	21000	5.2X10 ⁻⁶	0.05	0.5°	±0.1	40
MFX-34	3	6	18000	1.1X10 ⁻⁵	0.05	0.5°	±0.1	62
MFX-39	6	12	16000	2.2X10 ⁻⁵	0.05	0.5°	±0.1	93
MFX-44	9	18	14000	4.1X10 ⁻⁵	0.05	0.5°	±0.1	137

> Ma x. Bore Moment of Inertia / 最大孔徑時慣性矩

> Max. Bore Mass / 最大孔徑時質量

Dimension

unit : mm

Product No 產品名稱	A	L	W	Stock Bores 標準孔徑 D1xD2(公差 H8)		M
				Min D1	Max D2	
MFX-16	16	6	17.4	4	8	4-M3
MFX-19	19	6.8	20	5	10	4-M3
MFX-24	24	8.5	25	5	12	4-M4
MFX-29	29	10.2	30	6	14	4-M4
MFX-34	34	12	35	8	18	4-M5
MFX-39	39	13.5	40	10	20	4-M5
MFX-44	44	15.5	45	12	22	4-M6

When Ordering

請依照型錄所制訂的產品規格訂購，兩側孔徑可依客戶需在規範內加工製作。

When placing an order, make sure to include product no.

And stock bores (both sides) of product.

MFX - 34 - ø10 x ø12

Product No D1 x D2

MFX-C



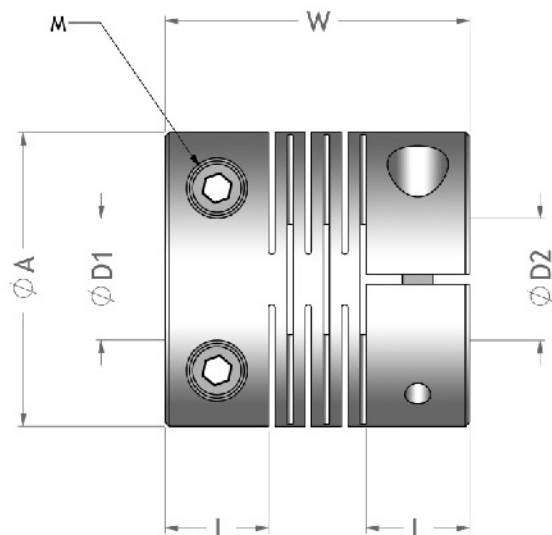
Features

- One-piece metallic spring coupling.
- Extremely high torsional stiffness, low inertia and excellent response.
- Absorption of parallel, angular misalignments and shaft endplay by spring action.
- Identical clockwise and counter-clockwise rotational characteristics.
- Finished products featuring two different end bore diameters available in stock.
- Clamp type.
- MFX-C Body : Extra Super Duralumin.

特性

- 一體狹縫切割型金屬撓性聯軸器
- 超高扭轉剛性，低慣性和卓越的應答度。
- 狹縫切割構成的彈簧板，可容許偏心、偏角及軸向偏差。
- 順、逆時針迴轉特性完全相同。
- 兩端不同孔徑的產品標準化。
- 夾鉗螺絲型固定。
- MFX-C 本體：鋁合金材質。

Setscrew type



Specifications

unit : mm

Product No 產品名稱	Rated Torque 常用扭矩 (N.m)	Max. Torque 最大扭矩 (N.m)	Max. Rotational Frequency 最高迴轉數 (min ⁻¹)	Moment* Of Inertia 慣性 (kg.m ²)	Error of Eccentricity 容許偏心率 (mm)	Error of Angularity 容許角偏差 (°)	Error of Shaft End-play 容許軸向偏差 (mm)	Mass** 質量 (g)
MFX-16C	0.5	1	39000	2.8X10 ⁻⁷	0.05	0.5°	±0.1	8
MFX-19C	1	2	33000	6.3X10 ⁻⁷	0.05	0.5°	±0.1	13
MFX-24C	1.5	3	26000	2.0X10 ⁻⁶	0.05	0.5°	±0.1	25
MFX-29C	2	4	21000	4.9X10 ⁻⁶	0.05	0.5°	±0.1	42
MFX-34C	3	6	18000	1.1X10 ⁻⁵	0.05	0.5°	±0.1	65
MFX-39C	6	12	16000	2.1X10 ⁻⁵	0.05	0.5°	±0.1	92
MFX-44C	9	18	14000	4.0X10 ⁻⁵	0.05	0.5°	±0.1	136

> Ma x. Bore Moment of Inertia / 最大孔徑時慣性矩

> Max. Bore Mass / 最大孔徑時質量

Dimension

unit : mm

Product No 產品名稱	A	L	W	Stock Bores 標準孔徑 D1xD2(公差 H8)		M
				Min D1	Max D2	
MFX-16C	16	6	17.4	4	6	4-M2.5
MFX-19C	19	6.8	20	5	9	4-M2.5
MFX-24C	24	8.5	25	5	10	4-M3
MFX-29C	29	10.2	30	6	12	4-M3
MFX-34C	34	12	35	8	16	4-M4
MFX-39C	39	13.5	40	10	20	4-M4
MFX-44C	44	15.5	45	12	22	4-M5

When Ordering

請依照型錄所制訂的產品規格訂購，兩側孔徑可依客戶需在規範內加工製作。

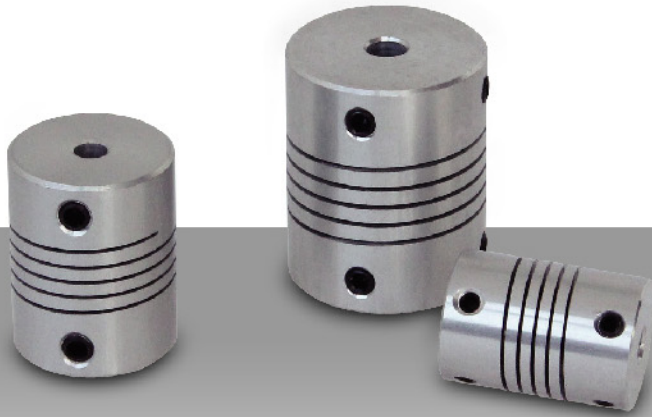
When placing an order, make sure to include product no.

And stock bores (both sides) of product.

MFX - 29C - ø8 x ø10

Product No D1 x D2

MFB



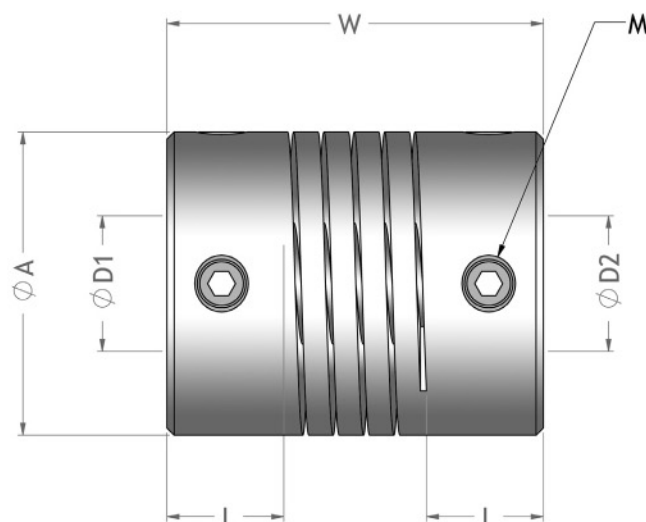
Features

- Ideal one-body metallic spring flexible couplings.
- Zero backlash.
- Complete absorption of eccentricity angularity, and end-play by spring action.
- High torsion stiffness and response.
- Identical clockwise and anticlockwise rotational characteristics.
- Maintenance-free, oil and chemical resistant.
- Setscrew type.
- MFB Body : Extra Super Duralumin.

特性

- 完美單一本體，撓性聯軸器。
- 零作用力。
- 藉由彈性作用，完美吸收軸偏移、角偏差、軸端部位差。
- 高扭力、高負荷。
- 可正逆轉特性。
- 免保養、抗油、抗化學性。
- 止付螺絲型固定。
- MFB 本體：鋁合金材質。

Setscrew type



Specifications

unit : mm

Product No 產品名稱	Rated Torque 常用扭矩 (N.m)	Max. Torque 最大扭矩 (N.m)	Max. Rotational Frequency 最高迴轉數 (min ⁻¹)	Moment* Of Inertia 慣性 (kg.m ²)	Error of Eccentricity 容許偏心率 (mm)	Error of Angularity 容許角偏差 (°)	Error of Shaft End-play 容許軸向偏差 (mm)	Mass** 質量 (g)
MFB-16	0.32	0.64	24000	3.3x10 ⁻⁷	0.10	3°	±0.4	8.2
MFB-20	0.51	1.02	19000	8.8x10 ⁻⁷	0.10	3°	±0.4	15.5
MFB-25	1.3	2.6	15000	2.4x10 ⁻⁶	0.15	3°	±0.5	30.0

> Max. Bore Moment of Inertia / 最大孔徑時慣性矩

> Max. Bore Mass / 最大孔徑時質量

Dimension

unit : mm

Product No 產品名稱	A	L	W	Stock Bores 標準孔徑 D1xD2(公差 H8)		M
				Min D1	Max D2	
MFB-16	16	6.5	23	4	8	4-M3
MFB-20	20	7.5	26	5	10	4-M4
MFB-25	25	8.5	31	6	12	4-M4

When Ordering

請依照型錄所制訂的產品規格訂購，兩側孔徑可依客戶需在規範內加工製作。

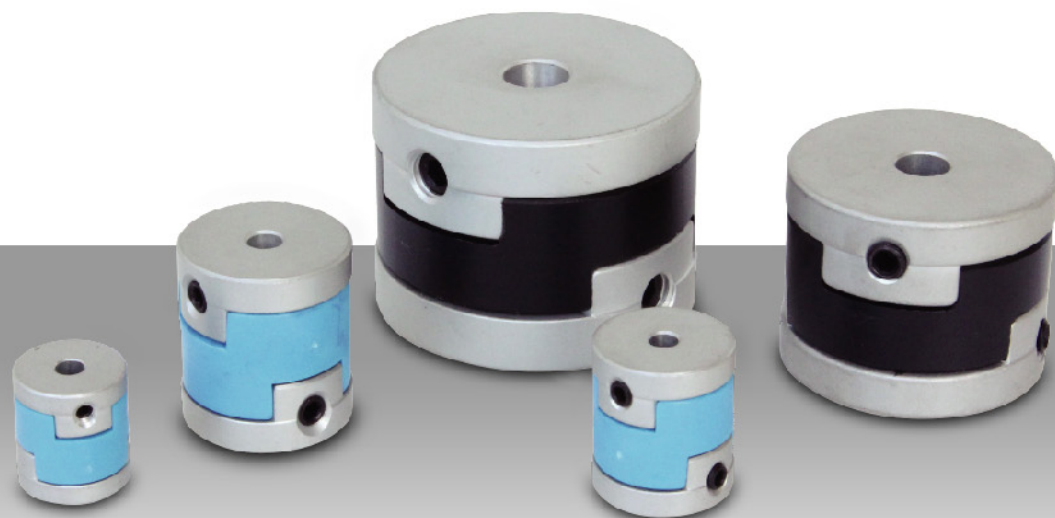
When placing an order, make sure to include product no.

And stock bores (both sides) of product.

MFB - 20 - ø5 x ø8

Product No D1 x D2

MFL



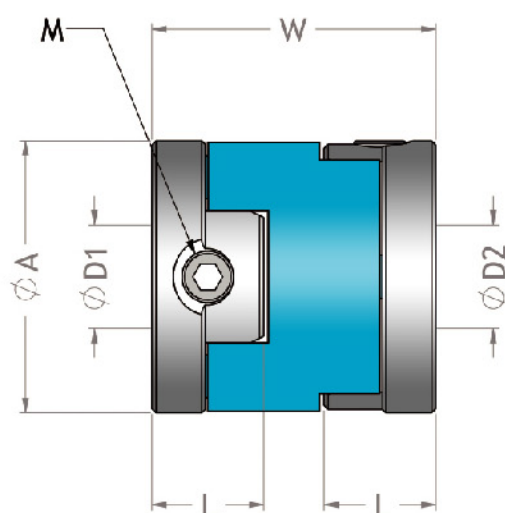
Features

- Slippage of hub and spacer enables high allowable eccentricity and angularity.
- Minimized load on shaft caused by misalignments.
- High torsion stiffness and excellent response.
- Simple configuration enables easy assembly.
- Maintenance-free excellent resistance to oil and Electrical insulation.
- Operational temperature: $-20^{\circ}\text{C} \sim 80^{\circ}\text{C}$.
- Finished products featuring two different end bore diameters available in stock.
- Setscrew type.
- MFL body : Aluminum alloy.

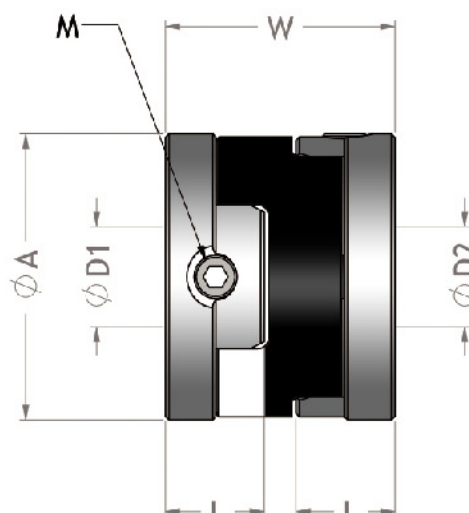
特性

- 藉轂和間隔環滑動，取得一極大允許偏心量和角偏度量。
- 偏差所引起的軸心負荷小，可減輕軸心負擔。
- 高扭力元件、高靈敏反應。
- 簡單設計、容易組裝。
- 免保養、優異抗油性和絕緣性。
- 可能使用溫度： $-20^{\circ}\text{C} \sim 80^{\circ}\text{C}$ 。
- 兩端不同孔徑的產品標準化。
- 止付螺絲型固定。
- MFL 本體：鋁合金材質。

Setscrew type



MFL-16-32



MFL-40-50

Specifications

unit : mm

Product No 產品名稱	Rated Torque 常用扭矩 (N.m)	Max. Torque 最大扭矩 (N.m)	Max. Rotational Frequency 最高迴轉數 (min ⁻¹)	Moment* Of Inertia 慣性 (kg.m ²)	Error of Eccentricity 容許偏心量 (mm)	Error of Angularity 容許角偏差 (°)	Mass** 質量 (g)
MFL-16	0.7	1.4	9500	3.0x10 ⁻⁷	1.0	3°	6.5
MFL-20	1.2	2.4	7600	1.1x10 ⁻⁶	1.5	3°	14.0
MFL-25	2.0	4.0	6100	2.7x10 ⁻⁶	2.0	3°	27.0
MFL-32	4.5	9.0	4800	9.0x10 ⁻⁶	2.5	3°	45.0
MFL-40	9.0	18.0	3800	2.2x10 ⁻⁵	3.0	3°	80.0
MFL-50	18.0	36.0	3100	6.3x10 ⁻⁴	3.5	3°	150.0

> Max. Bore Moment of Inertia / 最大孔徑時慣性矩

> Max. Bore Mass / 最大孔徑時質量

Dimension

unit : mm

Product No 產品名稱	A	L	W	Stock Bores 標準孔徑 D1xD2(公差 H8)		M
				Min D1	Max D2	
MFL-16	16	7	18	4	6	2-M3
MFL-20	20	9	23	4	8	2-M4
MFL-25	25	11	28	5	10	2-M5
MFL-32	32	13	33	6	14	2-M6
MFL-40	40	14	32	10	16	2-M6
MFL-50	50	17	38	12	20	2-M8

When Ordering

請依照型錄所制訂的產品規格訂購，兩側孔徑可依客戶需在規範內加工製作。

When placing an order, make sure to include product no.

And stock bores (both sides) of product.

MFL-20-ø5xø8

Product No D1 x D2

MFL-C



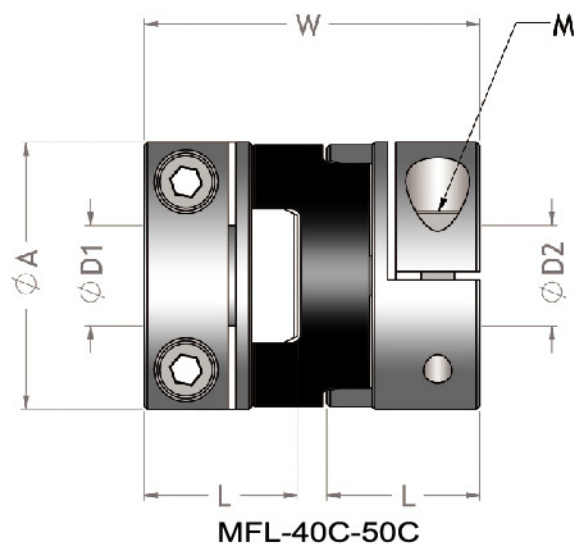
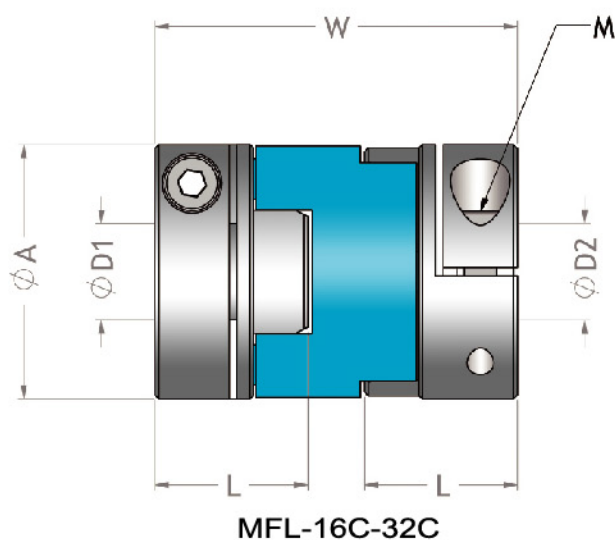
Features

- Slippage of hub and spacer enables high allowable eccentricity and angularity.
- Minimized load on shaft caused by misalignments.
- High torsion stiffness and excellent response.
- Simple configuration enables easy assembly.
- Maintenance-free excellent resistance to oil and Electrical insulation.
- Operational temperature: $-20^{\circ}\text{C} \sim 80^{\circ}\text{C}$.
- Finished products featuring two different end bore diameters available in stock.
- Clamp type.
- MFL-C body : Aluminum alloy.

特性

- 藉轂和間隔環滑動，取得一極大允許偏心率及角偏度量。
- 偏差所引起的軸心負荷小，可減輕軸心負擔。
- 高扭力元件、高靈敏反應。
- 簡單設計、容易組裝。
- 免保養、優異抗油性和絕緣性。
- 可能使用溫度： $-20^{\circ}\text{C} \sim 80^{\circ}\text{C}$ 。
- 兩端不同孔徑的產品標準化。
- 夾鉗螺絲型固定。
- MFL-C 本體：鋁合金材質。

Clamp type



Specifications

unit : mm

Product No 產品名稱	Rated Torque 常用扭矩 (N.m)	Max. Torque 最大扭矩 (N.m)	Max. Rotational Frequency 最高迴轉數 (min ⁻¹)	Moment* Of Inertia 慣性 (kg.m ²)	Error of Eccentricity 容許偏心量 (mm)	Error of Angularity 容許角偏差 (°)	Mass** 質量 (g)
MFL-16C	0.7	1.4	9500	5.0x10 ⁻⁷	1.0	3°	11.5
MFL-20C	1.2	2.4	7600	1.3x10 ⁻⁶	1.5	3°	19.0
MFL-25C	2.0	4.0	6100	3.9x10 ⁻⁶	2.0	3°	36.0
MFL-32C	4.5	9.0	4800	1.2x10 ⁻⁵	2.5	3°	68.0
MFL-40C	9.0	18.0	3800	3.5x10 ⁻⁵	3.0	3°	130.0
MFL-50C	18.0	36.0	3100	1.0x10 ⁻⁴	3.5	3°	230.0

> Max. Bore Moment of Inertia / 最大孔徑時慣性矩

> Max. Bore Mass / 最大孔徑時質量

Dimension

unit : mm

Product No 產品名稱	A	L	W	Stock Bores 標準孔徑 D1xD2(公差 H8)		M
				Min D1	Max D2	
MFL-16C	16	13	29	5	6	2-M2.5
MFL-20C	20	14	33	5	8	2-M2.5
MFL-25C	25	17	39	5	10	2-M3
MFL-32C	32	19	45	6	14	2-M4
MFL-40C	40	23	50	10	16	4-M5
MFL-50C	50	27	58	12	20	4-M6

When Ordering

請依照型錄所制訂的產品規格訂購，兩側孔徑可依客戶需在規範內加工製作。

When placing an order, make sure to include product no.

And stock bores (both sides) of product.

MFL - 32C - ∅ 8 x ∅ 8

Product No D1 x D2

MPS-C



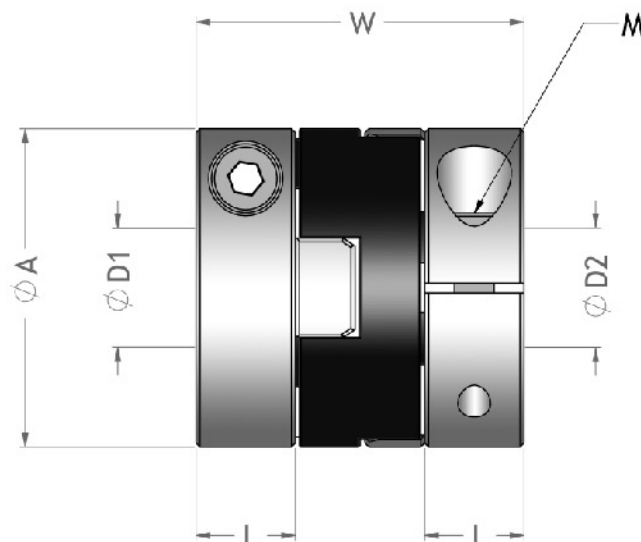
Features

- Slippage between hubs and spacer allows high parallel and angular misalignments.
- Minimized load on shaft caused by misalignments.
- Simple configuration enables ease of assembly.
- Excellent electrical insulation.
- Operational temperature: $-20^{\circ}\text{C} \sim 80^{\circ}\text{C}$.
- Finished products featuring two different end bore diameters available in stock.
- Clamp type.
- MPS-C body : Aluminum alloy.

特性

- 軸套和間隔塊的滑動作用，可容許較大的偏心和偏角。
- 偏差所引起的軸心負荷小，可減輕軸心負擔。
- 結構簡單，安裝容易。
- 電氣絕緣性。
- 可能使用溫度： $-20^{\circ}\text{C} \sim 80^{\circ}\text{C}$ 。
- 兩端不同孔徑的產品標準化。
- 夾鉗螺絲型固定。
- MPS-C 本體：鋁合金材質。

Setscrew type



Specifications

unit : mm

Product No 產品名稱	Rated Torque 常用扭矩 (N.m)	Max. Torque 最大扭矩 (N.m)	Max. Rotational Frequency 最高迴轉數 (min ⁻¹)	Moment* Of Inertia 慣性 (kg.m ²)	Error of Eccentricity 容許偏心率 (mm)	Error of Angularity 容許角偏差 (°)	Mass** 質量 (g)
MPS-16C	0.4	0.8	9500	3.07X10 ⁻⁷	1.0	2°	8.3
MPS-20C	0.7	1.4	7600	7.65X10 ⁻⁷	1.3	2°	13
MPS-25C	1.2	2.4	6100	2.27X10 ⁻⁶	1.5	2°	24
MPS-32C	2.8	5.6	4800	7.33X10 ⁻⁶	2.0	2°	48

> Max. Bore Moment of Inertia / 最大孔徑時慣性矩

> Max. Bore Mass / 最大孔徑時質量

Dimension

unit : mm

Product No 產品名稱	A	L	W	Stock Bores 標準孔徑 D1xD2(公差 H8)		M
				Min D1	Max D2	
MPS-16C	16	7	21	4	6	2-M2.5
MPS-20C	20	7	22	5	8	2-M2.5
MPS-25C	25	8	27	6	10	2-M3
MPS-32C	32	10	33	8	14	2-M4

When Ordering

請依照型錄所制訂的產品規格訂購，兩側孔徑可依客戶需在規範內加工製作。

When placing an order, make sure to include product no.

And stock bores (both sides) of product.

MPS - 25C - ∅8 x ∅10

Product No D1 x D2

MFR



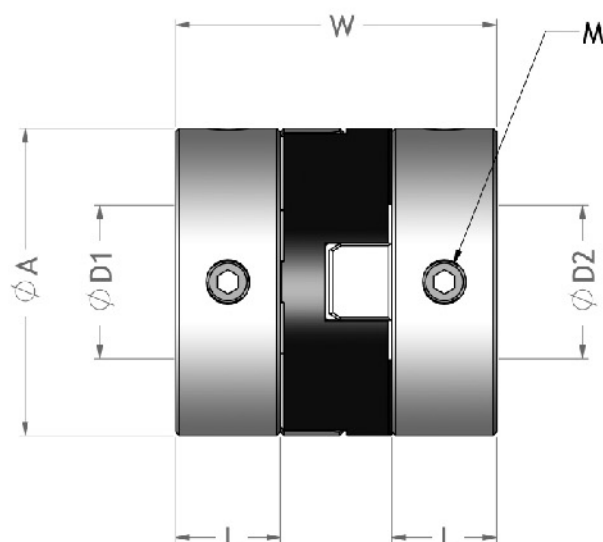
Features

- Slippage between hubs and spacer allows high parallel and angular misalignments.
- Minimized load on shaft caused by misalignments.
- Simple configuration enables ease of assembly.
- Excellent electrical insulation.
- Operational temperature: $-20^{\circ}\text{C} \sim 80^{\circ}\text{C}$.
- Finished products featuring two different end bore diameters available in stock.
- Setscrew type.
- MFR body : Aluminum alloy.

特性

- 軸套和間隔塊的滑動作用，可容許較大的偏心和偏角。
- 偏差所引起的軸心負荷小，可減輕軸心負擔。
- 結構簡單，安裝容易。
- 電氣絕緣性。
- 可能使用溫度： $-20^{\circ}\text{C} \sim 80^{\circ}\text{C}$ 。
- 兩端不同孔徑的產品標準化。
- 止付螺絲型固定。
- MFR 本體：鋁合金材質。

Setscrew type



Specifications

unit : mm

Product No 產品名稱	Rated Torque 常用扭矩 (N.m)	Max. Torque 最大扭矩 (N.m)	Max. Rotational Frequency. 最高迴轉數 (min ⁻¹)	Moment* Of Inertia 慣性 (kg.m ²)	Error of Eccentricity 容許偏心率 (mm)	Error of Angularity 容許角偏差 (°)	Mass** 質量 (g)
MFR-44	15	30	12000	3.8X10 ⁻⁵	1	2°	126
MFR-55	22.5	45	10000	1.2X10 ⁻⁴	1.5	2°	262
MFR-70	40	80	8000	4.0X10 ⁻⁴	1	2°	502

> Ma x. Bore Moment of Inertia / 最大孔徑時慣性矩

> Max. Bore Mass / 最大孔徑時質量

Dimension

unit : mm

Product No 產品名稱	A	L	W	Stock Bores 標準孔徑 D1xD2(公差 H8)		M
				Min D1	Max D2	
MFR-44	44	15	46	14	22	4-M6
MFR-55	55	19	57	18	26	4-M8
MFR-70	70	25	77	22	38	4-M10

When Ordering

請依照型錄所制訂的產品規格訂購，兩側孔徑可依客戶需在規範內加工製作。

When placing an order, make sure to include product no.

And stock bores (both sides) of product.

MFR - 44 - ø 20 x ø 20

Product No D1 x D2

MFR-C



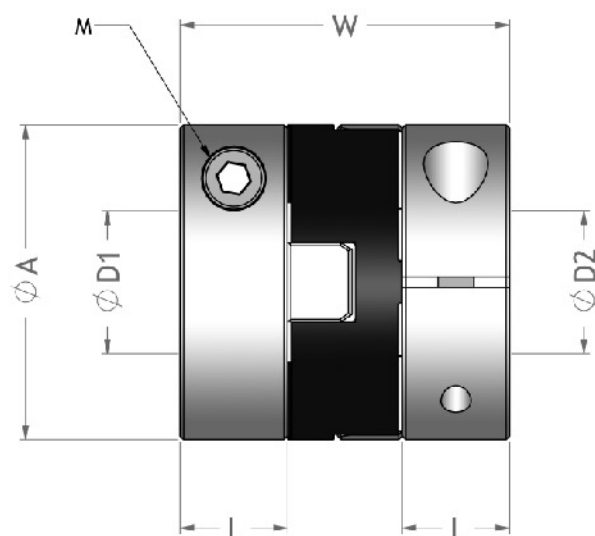
Features

- Slippage between hubs and spacer allows high parallel and angular misalignments.
- Minimized load on shaft caused by misalignments.
- Simple configuration enables ease of assembly.
- Excellent electrical insulation.
- Operational temperature: $-20^{\circ}\text{C} \sim 80^{\circ}\text{C}$.
- Finished products featuring two different end bore diameters available in stock.
- Clamp type.
- MFR-C body : Aluminum alloy.

特性

- 軸套和間隔塊的滑動作用，可容許較大的偏心和偏角。
- 偏差所引起的軸心負荷小，可減輕軸心負擔。
- 結構簡單，安裝容易。
- 電氣絕緣性。
- 可能使用溫度： $-20^{\circ}\text{C} \sim 80^{\circ}\text{C}$ 。
- 兩端不同孔徑的產品標準化。
- 夾鉗螺絲型固定。
- MFR-C 本體：鋁合金材質。

Setscrew type



Specifications

unit : mm

Product No 產品名稱	Rated Torque 常用扭矩 (N.m)	Max. Torque 最大扭矩 (N.m)	Max. Rotational Frequency. 最高迴轉數 (min ⁻¹)	Moment* Of Inertia 慣性 (kg.m ²)	Error of Eccentricity 容許偏心率 (mm)	Error of Angularity 容許角偏差 (°)	Mass** 質量 (g)
MFR-44C	13	26	12000	3.7X10 ⁻⁵	1	2°	129
MFR-55C	20	40	10000	1.1X10 ⁻⁴	1.5	2°	250
MFR-70C	36	72	8000	3.9X10 ⁻⁴	2	2°	512

> Ma x. Bore Moment of Inertia / 最大孔徑時慣性矩

> Max. Bore Mass / 最大孔徑時質量

Dimension

unit : mm

Product No 產品名稱	A	L	W	Stock Bores 標準孔徑 D1xD2(公差 H8)		M
				Min D1	Max D2	
MFR-44C	44	15	46	14	20	2-M5
MFR-55C	55	19	57	18	25	2-M6
MFR-70C	70	25	77	22	35	2-M8

When Ordering

請依照型錄所制訂的產品規格訂購，兩側孔徑可依客戶需在規範內加工製作。

When placing an order, make sure to include product no.

And stock bores (both sides) of product.

MFR - 55C - ø18 x ø20

Product No D1 x D2

MHC-C



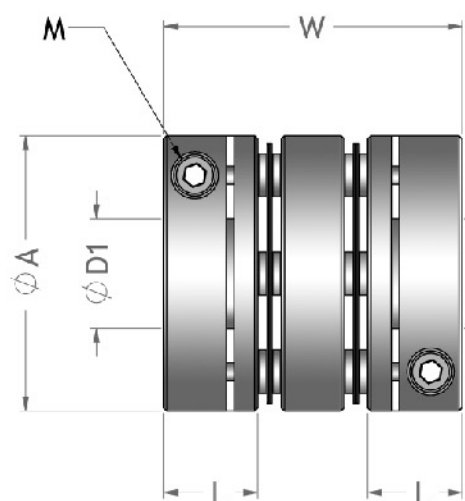
Features

- Disk type flexible coupling
- Stainless steel disks absorb parallel, angular and shaft end-play misalignments
- Identical clockwise and counter-clockwise rotational characteristics
- Suitable to small servo system exact transmission.
- Low moment of inertia backlash-free.
- Finished products featuring two different end bore diameters available in stock
- Clamp type.
- MHC-C Body : Extra Super Duralumin.

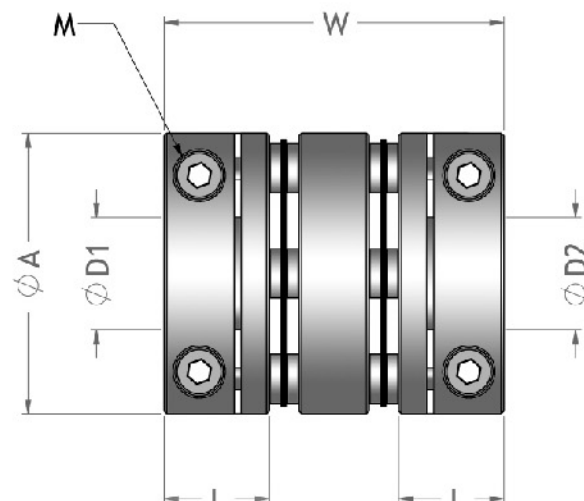
特性

- 簧片式撓性聯軸器。
- 雙組不銹鋼簧片可容許偏心、偏角反軸向偏差。
- 順、逆時針迴轉特性完全相同。
- 適於中小型伺服馬達精密定位傳動。
- 低慣性、無背隙。
- 兩端不同孔徑的產品標準化。
- 夾鉗螺絲型固定。
- MHC-C 本體：鋁合金材質。

Clamp type



MHC-27C-35C



MHC-40C-95C

Specifications

unit : mm

Product No 產品名稱	Rated Torque 常用扭矩 (N.m)	Max. Torque 最大扭矩 (N.m)	Max. Rotational Frequency 最高迴轉數 (min ⁻¹)	Moment* Of Inertia 慣性 (kg.m ²)	Error of Eccentricity 容許偏心率 (mm)	Error of Angularity 容許角偏差 (°)	Error of Shaft End-play 容許軸向偏差 (mm)	Mass** 質量 (g)
MHC-27C	1.8	3.6	10000	4.7x10 ⁻⁶	0.15	2°	±0.33	45.0
MHC-35C	4.0	8.0	10000	1.4x10 ⁻⁵	0.17	2°	±0.4	77.0
MHC-40C	7.0	14.0	10000	3.1x10 ⁻⁵	0.22	2°	±0.5	134.0
MHC-45C	10.0	20.0	10000	4.8x10 ⁻⁵	0.22	2°	±0.6	160.0
MHC-50C	16.0	32.0	10000	9.8x10 ⁻⁵	0.24	2°	±0.7	265.0
MHC-57C	26.0	52.0	10000	16.2x10 ⁻⁵	0.27	2°	±0.8	337.0
MHC-68C	62.0	124.0	10000	40.0x10 ⁻⁵	0.35	2°	±0.9	570.0
MHC-82C	100.0	200.0	10000	11.5x10 ⁻⁴	0.55	2°	±1.2	1163.0
MHC-95C	180.0	360.0	10000	20.7x10 ⁻⁴	0.55	2°	±1.3	1512.0

> Ma x. Bore Moment of Inertia / 最大孔徑時慣性矩

> Max. Bore Mass / 最大孔徑時質量

Dimension

unit : mm

Product No 產品名稱	A	L	W	Stock Bores 標準孔徑 D1xD2(公差 H8)		M
				Min D1	Max D2	
MHC-27C	27	11	35	5	10	2-M3
MHC-35C	35	12	38	6	14	2-M3
MHC-40C	40	15	48	8	16	4-M4
MHC-45C	45	15	48	10	20	4-M4
MHC-50C	50	20	62	12	22	4-M5
MHC-57C	57	20	62	12	25	4-M5
MHC-68C	68	24	74	14	32	4-M6
MHC-82C	82	30	98	19	35	4-M8
MHC-95C	95	30	98	22	45	4-M8

When Ordering

請依照型錄所制訂的產品規格訂購，兩側孔徑可依客戶需在規範內加工製作。

When placing an order, make sure to include product no.

And stock bores (both sides) of product.

MHC - 68C - ø16 x ø22

Product No D1 x D2

MHS-C



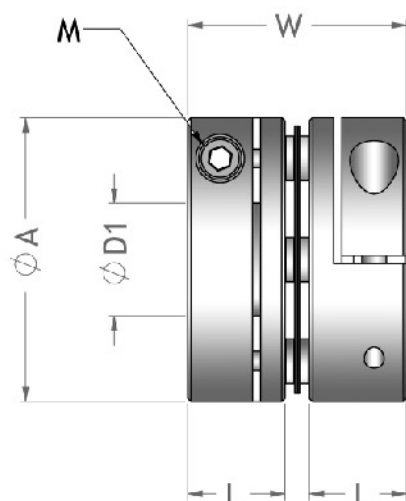
Features

- Disk type flexible coupling.
- Compact design with short overall length.
- Stainless steel disks absorb angular and shaft end-play misalignments, but do not absorb parallel misalignment.
- Suitable to small servo system exact transmission.
- Low moment of inertia backlash-free.
- Finished products featuring two different end bore diameters available in stock.
- Clamp type.
- MHS-C Body : Extra Super Duralumin.

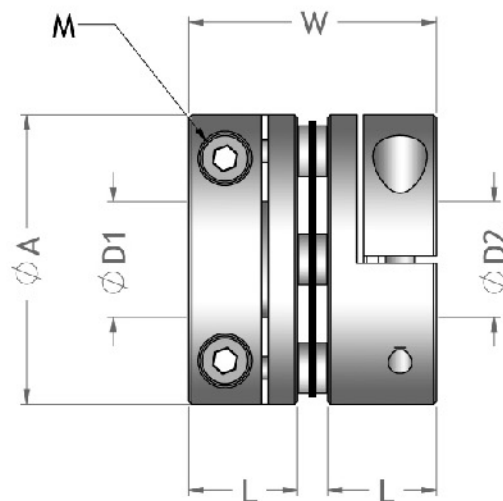
特性

- 簧片型撓性聯軸器
- 長度短，體積小巧。
- 單組不銹鋼簧片可容許偏角和軸向偏差；但不容許偏心。
- 適於中小型伺服馬達精密定位傳動。
- 低慣性、無背隙。
- 兩端不同孔徑的產品標準化。
- 夾鉗螺絲型固定。
- MHS-C 本體：鋁合金材質。

Clamp type



MHS-27C-35C



MHS-40C-95C

Specifications

unit : mm

Product No 產品名稱	Rated Torque 常用扭矩 (N.m)	Max. Torque 最大扭矩 (N.m)	Max. Rotational Frequency 最高迴轉數 (min ⁻¹)	Moment* Of Inertia 慣性 (kg.m ²)	Error of Angularity 容許角偏差 (°)	Error of Shaft End-play 容許軸向偏差 (mm)	Mass** 質量 (g)
MHS-27C	1.8	3.6	10000	3.1x10 ⁻⁶	1°	±0.15	30.0
MHS-35C	4.0	8.0	10000	8.0x10 ⁻⁶	1°	±0.2	54.0
MHS-40C	7.0	14.0	10000	2.0x10 ⁻⁵	1°	±0.25	94.0
MHS-45C	10.0	20.0	10000	2.8x10 ⁻⁵	1°	±0.3	112.0
MHS-50C	16.0	32.0	10000	6.6x10 ⁻⁵	1°	±0.35	189.0
MHS-57C	26.0	52.0	10000	9.8x10 ⁻⁵	1°	±0.4	242.0
MHS-68C	62.0	124.0	10000	24.0x10 ⁻⁵	1°	±0.45	408.0
MHS-82C	100.0	200.0	10000	6.8x10 ⁻⁴	1°	±0.6	791.0
MHS-95C	180.0	360.0	10000	10.8x10 ⁻⁴	1°	±0.65	1024.0

> Ma x. Bore Moment of Inertia / 最大孔徑時慣性矩

> Max. Bore Mass / 最大孔徑時質量

Dimension

unit : mm

Product No 產品名稱	A	L	W	Stock Bores 標準孔徑 D1xD2(公差 H8)		M
				Min D1	Max D2	
MHS-27C	27	11	24.5	5	10	2-M3
MHS-35C	35	12	27	6	14	2-M3
MHS-40C	40	15	34	8	16	4-M4
MHS-45C	45	15	34	10	20	4-M4
MHS-50C	50	20	45	12	22	4-M5
MHS-57C	57	20	45	12	25	4-M5
MHS-68C	68	24	54	14	32	4-M6
MHS-82C	82	30	68	19	35	4-M8
MHS-95C	95	30	68	22	45	4-M8

When Ordering

請依照型錄所制訂的產品規格訂購，兩側孔徑可依客戶需在規範內加工製作。

When placing an order, make sure to include product no.

And stock bores (both sides) of product.

MHS - 50C - ø12 x ø20

Product No D1 x D2

XHCA-C



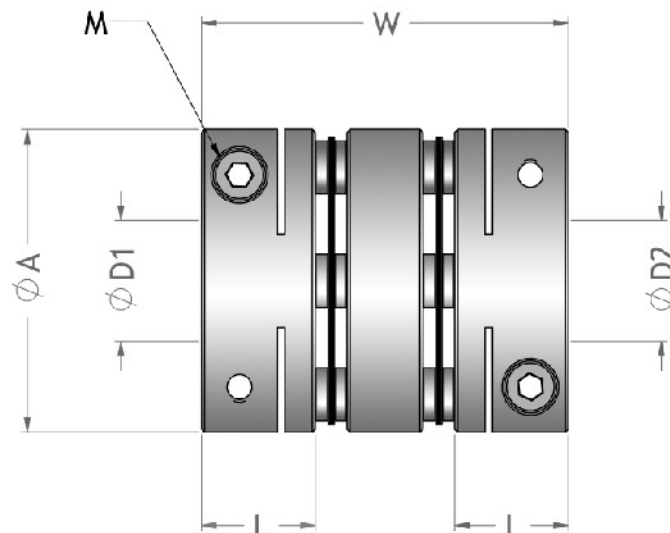
Features

- Disk type flexible coupling
- Stainless steel disks absorb parallel, angular and shaft end-play misalignments
- Identical clockwise and counter-clockwise rotational characteristics
- Suitable to small servo system exact transmission.
- Low moment of inertia backlash-free.
- Finished products featuring two different end bore diameters available in stock
- Clamp type.
- XHCA-C Body : Extra Super Duralumin.

特性

- 簧片式撓性聯軸器。
- 雙組不銹鋼簧片可容許偏心、偏角反軸向偏差。
- 順、逆時針迴轉特性完全相同。
- 適於中小型伺服馬達精密定位傳動。
- 低慣性、無背隙。
- 兩端不同孔徑的產品標準化。
- 夾鉗螺絲型固定。
- XHCA-C 本體：鋁合金材質。

Setscrew type



Specifications

unit : mm

Product No 產品名稱	Rated Torque 常用扭矩 (N.m)	Max. Torque 最大扭矩 (N.m)	Max. Rotational Frequency 最高迴轉數 (min ⁻¹)	Moment* Of Inertia 慣性 (kg.m ²)	Error of Eccentricity 容許偏心量 (mm)	Error of Angularity 容許角偏差 (°)	Error of Shaft End-play 容許軸向偏差 (mm)	Mass** 質量 (g)
XHCA-27C	2.5	5.0	23000	4.5x10 ⁻⁶	0.2	2°	±0.4	39.0
XHCA-35C	5.0	10.0	18000	1.4x10 ⁻⁵	0.25	2°	±0.4	75.0
XHCA-40C	9.0	18.0	16000	3.0x10 ⁻⁵	0.3	2°	±0.6	125.0
XHCA-45C	12.0	24.0	14000	4.8x10 ⁻⁵	0.3	2°	±0.6	155.0
XHCA-50C	18.0	36.0	12000	9.9x10 ⁻⁵	0.3	2°	±0.6	257.0
XHCA-57C	26.0	52.0	11000	16.5x10 ⁻⁵	0.3	2°	±0.8	330.0
XHCA-68C	62.0	124.0	10000	40.0x10 ⁻⁵	0.3	2°	±0.8	554.0

> Ma x. Bore Moment of Inertia / 最大孔徑時慣性矩

> Max. Bore Mass / 最大孔徑時質量

Dimension

unit : mm

Product No 產品名稱	A	L	W	Stock Bores 標準孔徑 D1xD2(公差 H8)		M
				Min D1	Max D2	
XHCA-27C	27	11	35	5	14	4-M3
XHCA-35C	35	12	38	6	16	4-M3
XHCA-40C	40	15	48	8	20	4-M4
XHCA-45C	45	15	48	8	22	4-M4
XHCA-50C	50	20	62	10	25	4-M5
XHCA-57C	57	20	62	12	28	4-M5
XHCA-68C	68	24	74	14	35	4-M6

When Ordering

請依照型錄所制訂的產品規格訂購，兩側孔徑可依客戶需在規範內加工製作。

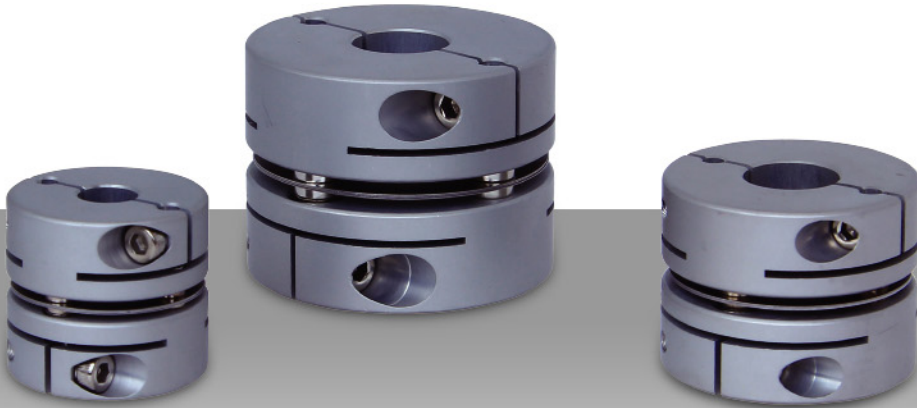
When placing an order, make sure to include product no.

And stock bores (both sides) of product.

XHCA-40C-∅10 x ∅12

Product No D1 x D2

XHSA-C



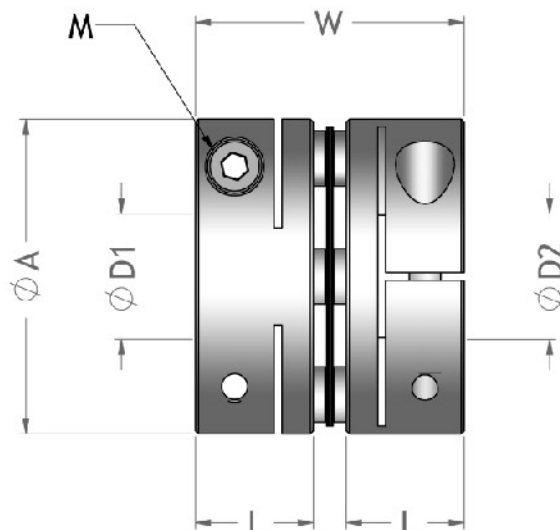
Features

- Disk type flexible coupling.
- Compact design with short overall length.
- Stainless steel disks absorb angular and shaft end-play misalignments, but do not absorb parallel misalignment.
- Suitable to small servo system exact transmission.
- Low moment of inertia backlash-free.
- Finished products featuring two different end bore diameters available in stock.
- Clamp type.
- XHSA-C Body : Extra Super Duralumin.

特性

- 簧片型撓性聯軸器
- 長度短，體積小巧。
- 單組不銹鋼簧片可容許偏角和軸向偏差；但不容許偏心。
- 適於中小型伺服馬達精密定位傳動。
- 低慣性、無背隙。
- 兩端不同孔徑的產品標準化。
- 夾鉗螺絲型固定。
- XHSA-C 本體：鋁合金材質。

Setscrew type



Specifications

unit : mm

Product No 產品名稱	Rated Torque 常用扭矩 (N.m)	Max. Torque 最大扭矩 (N.m)	Max. Rotational Frequency 最高迴轉數 (min ⁻¹)	Moment* Of Inertia 慣性 (kg.m ²)	Error of Angularity 容許角偏差 (°)	Error of Shaft End-play 容許軸向偏差 (mm)	Mass** 質量 (g)
XHSA-27C	2.5	5.0	23000	2.9x10 ⁻⁶	1°	±0.2	28.0
XHSA-35C	5.0	10.0	18000	7.9x10 ⁻⁶	1°	±0.2	53.0
XHSA -40C	9.0	18.0	16000	1.9x10 ⁻⁵	1°	±0.3	87.0
XHSA-45C	12.0	24.0	14000	2.7x10 ⁻⁵	1°	±0.3	109.0
XHSA -50C	18.0	36.0	12000	6.6x10 ⁻⁵	1°	±0.3	184.0
XHSA -57C	26.0	52.0	11000	9.7x10 ⁻⁵	1°	±0.4	237.0
XHSA -68C	62.0	124.0	10000	23.7x10 ⁻⁵	1°	±0.4	398.0

> Ma x. Bore Moment of Inertia / 最大孔徑時慣性矩

> Max. Bore Mass / 最大孔徑時質量

Dimension

unit : mm

Product No 產品名稱	A	L	W	Stock Bores 標準孔徑 D1xD2(公差 H8)		M
				Min D1	Max D2	
XHSA-27C	27	11	24.5	5	14	4-M3
XHSA-35C	35	12	27	6	16	4-M3
XHSA -40C	40	15	34	8	20	4-M4
XHSA-45C	45	15	34	8	22	4-M4
XHSA -50C	50	20	45	10	25	4-M5
XHSA -57C	57	20	45	12	28	4-M5
XHSA -68C	68	24	54	14	35	4-M6

When Ordering

請依照型錄所制訂的產品規格訂購，兩側孔徑可依客戶需在規範內加工製作。

When placing an order, make sure to include product no.

And stock bores (both sides) of product.

XHSA - 50C - ø 20 x ø 20

Product No D1 x D2

MTC



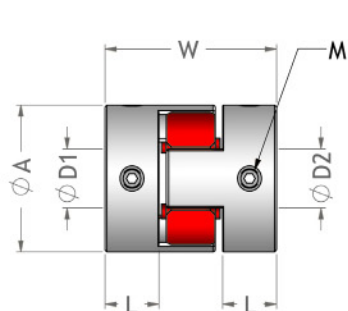
Features

- High Torque, Vibration Absorption, Press Fitted Sleeve
- Extremely high torsional stiffness, low inertia and excellent response
- Vibration Absorption 'angular misalignments and shaft endplay by spring action
- Excellent electrical insulation
- Identical clockwise and counter-clockwise rotational characteristics
- Finished products featuring two different end bore diameters available in stock.
- Setscrew type
- MTC Body : Aluminum alloy.

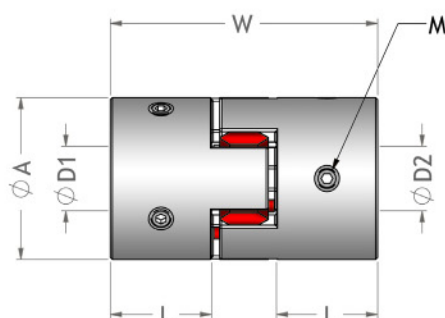
特性

- 高扭矩・吸收振動・彈性間隔體壓入式
- 超高扭轉剛性，低慣性和卓越的應答度。
- 吸收振動，可容許偏心、偏角及軸向偏差。
- 具有電氣絕緣性。
- 順、逆時針回轉特性完全相同。
- 兩端不同孔徑的產品標準化。
- 止付螺絲型固定。
- MTC 本體：鋁合金材質。

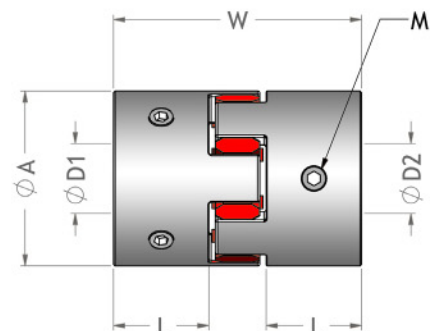
Setscrew type



MTC-20RD-30RD



MTC-40RD



MTC-55RD-65RD

Specifications

unit : mm

Product No 產品名稱	Rated Torque 常用扭矩 (N.m)	Max. Torque 最大扭矩 (N.m)	Max. Rotational Frequency 最高迴轉數 (min ⁻¹)	Moment* Of Inertia 慣性 (kg.m ²)	Error of Eccentricity 容許偏心量 (mm)	Error of Angularity 容許角偏差 (°)	Error of Shaft End-play 容許軸向偏差 (mm)	Mass** 質量 (g)
MTC-20-RD	5.0	10.0	19000	1.0x10 ⁻⁶	0.10	1°	±0.8	18
MTC-30-RD	12.5	25.0	13000	5.9x10 ⁻⁶	0.10	1°	±1.0	46
MTC-40-RD	17.0	34.0	9600	4.0x10 ⁻⁵	0.10	1°	±1.2	150
MTC-55-RD	60.0	120.0	7000	1.7x10 ⁻⁴	0.10	1°	±1.4	350
MTC-65-RD	160.0	320.0	5900	3.9x10 ⁻⁴	0.10	1°	±1.5	570

> Ma x. Bore Moment of Inertia / 最大孔徑時慣性矩

> Max. Bore Mass / 最大孔徑時質量

Dimension

unit : mm

Product No 產品名稱	A	L	W	Stock Bores 標準孔徑 D1xD2(公差 H8)		M
				Min D1	Max D2	
MTC-20-RD	20	10	30	4	8	4-M3
MTC-30-RD	30	11	35	6	14	4-M4
MTC-40-RD	40	25	66	8	20	4-M5
MTC-55-RD	55	30	78	10	25	4-M6
MTC-65-RD	65	35	90	12	35	4-M8

When Ordering

請依照型錄所制訂的產品規格訂購，兩側孔徑可依客戶需在規範內加工製作。

When placing an order, make sure to include product no.

And stock bores (both sides) of product.

MTC - 55 - RD ∅ 8 x ∅ 12

Product No D1 x D2

MTC-C



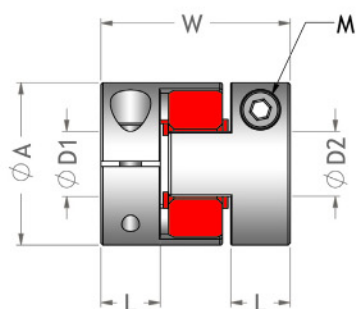
Features

- High Torque, Vibration Absorption, Press Fitted Sleeve
- Extremely high torsional stiffness, low inertia and excellent response
- Vibration Absorption 'angular misalignments and shaft endplay by spring action
- Excellent electrical insulation
- Identical clockwise and counter-clockwise rotational characteristics
- Finished products featuring two different end bore diameters available in stock.
- Clamp type
- MTC-C Body : Aluminum alloy.

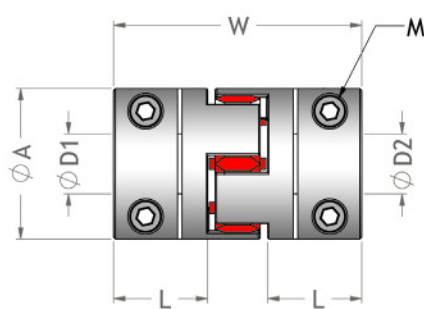
特性

- 高扭矩・吸收振動・彈性間隔體壓入式
- 超高扭轉剛性，低慣性和卓越的應答度。
- 吸收振動，可容許偏心、偏角及軸向偏差。
- 具有電氣絕緣性。
- 順、逆時針回轉特性完全相同。
- 兩端不同孔徑的產品標準化。
- 夾鉗螺絲型固定。
- MTC-C 本體：鋁合金材質。

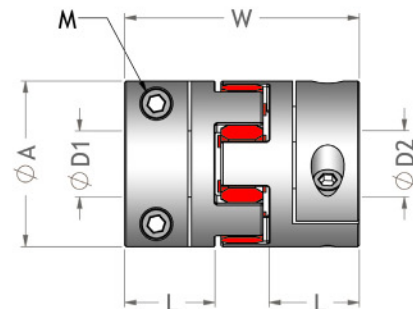
Clamp type



MTC-20C-RD-30C-RD



MTC-40C-RD



MTC-55C RD-65C-RD

Specifications

unit : mm

Product No 產品名稱	Rated Torque 常用扭矩 (N.m)	Max. Torque 最大扭矩 (N.m)	Max. Rotational Frequency 最高迴轉數 (min ⁻¹)	Moment* Of Inertia 慣性 (kg.m ²)	Error of Eccentricity 容許偏心量 (mm)	Error of Angularity 容許角偏差 (°)	Error of Shaft End-play 容許軸向偏差 (mm)	Mass** 質量 (g)
MTC-20C-RD	5.0	10.0	7600	1.1x10 ⁻⁶	0.10	1°	±0.8	19
MTC-30C-RD	12.5	25.0	5100	6.2x10 ⁻⁶	0.10	1°	±1.0	50
MTC-40C-RD-50	17.0	34.0	3800	3.0x10 ⁻⁵	0.10	1°	±1.2	125
MTC-40C-RD	17.0	34.0	3800	3.9x10 ⁻⁵	0.10	1°	±1.2	160
MTC-55C-RD-66	60.0	120.0	2800	1.35x10 ⁻⁴	0.10	1°	±1.4	295
MTC-55C-RD	60.0	120.0	2800	1.6x10 ⁻⁴	0.10	1°	±1.4	330
MTC-65C-RD	160.0	320.0	2350	3.8x10 ⁻⁴	0.10	1°	±1.5	560

> Ma x. Bore Moment of Inertia / 最大孔徑時慣性矩

> Max. Bore Mass / 最大孔徑時質量

Dimension

unit : mm

Product No 產品名稱	A	L	W	Stock Bores 標準孔徑 D1xD2(公差 H8)		M
				Min D1	Max D2	
MTC-20C-RD	20	10	30	5	8	2-M2.5
MTC-30C-RD	30	11	35	6	14	2-M4
MTC-40C-RD-50	40	17	50	8	19	2-M5
MTC-40C-RD	40	25	66	8	19	4-M5
MTC-55C-RD-66	55	24	66	10	25	4-M6
MTC-55C-RD	55	30	78	10	25	4-M6
MTC-65C-RD	65	35	90	12	35	4-M8

When Ordering

請依照型錄所制訂的產品規格訂購，兩側孔徑可依客戶需在規範內加工製作。

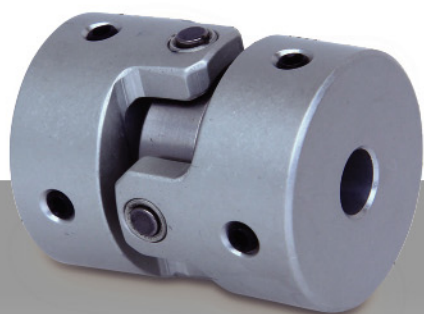
When placing an order, make sure to include product no.

And stock bores (both sides) of product.

MTC - 65C - RD ∅ 8 x ∅ 12

Product No D1 x D2

MSA



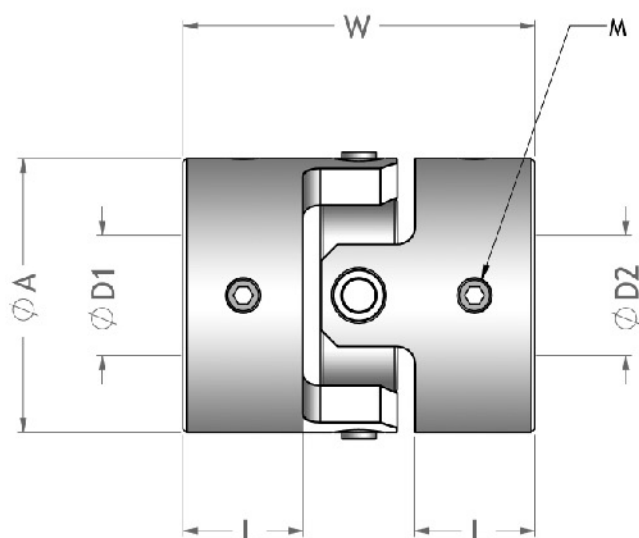
Features

- Slippage between the bush and pin allows for parallel and angular misalignments.
- Minimized backlash achieved through high precision fit of pin and bush.
- Minimized load on shaft caused by misalignments.
- Identical clockwise and counter-clockwise rotational characteristics.
- Finished products featuring two different end bore diameters available in stock.
- Setscrew type.
- MSA body : Aluminum alloy.

特性

- 軸套和間隔塊的滑動作用，可容許較大的偏心和偏角。
- 固定銷和襯套的高精密嚙合使背隙最小化。
- 偏差所引起的軸心負荷小，可減輕軸心負擔。
- 順、逆時針迴轉特性完全相同。
- 兩端不同孔徑的產品標準化。
- 止付螺絲型固定。
- MSA 本體：鋁合金材質。

Setscrew type



Specifications

unit : mm

Product No 產品名稱	Rated Torque 常用扭矩 (N.m)	Max. Torque 最大扭矩 (N.m)	Max. Rotational Frequency 最高迴轉數 (min ⁻¹)	Moment* Of Inertia 慣性 (kg.m ²)	Error of Eccentricity 容許偏心率 (mm)	Error of Angularity 容許角偏差 (°)	Error of Shaft End-play 容許軸向偏差 (mm)	Mass** 質量 (g)
MSA-25	1.2	2.4	6100	3.4x10 ⁻⁶	0.5	3°	-	42
MSA-32	3.0	6.0	4800	1.1x10 ⁻⁵	0.5	3°	-	83
MSA-40	6.0	12.0	3800	3.2x10 ⁻⁵	0.5	3°	-	155
MSA-50	10.0	20.0	3100	9.9x10 ⁻⁵	0.5	3°	-	306

> Ma x. Bore Moment of Inertia / 最大孔徑時慣性矩

> Max. Bore Mass / 最大孔徑時質量

Dimension

unit : mm

Product No 產品名稱	A	L	W	Stock Bores 標準孔徑 D1xD2(公差 H8)		M
				Min D1	Max D2	
MSA-25	25	11.5	34	6	10	4-M4
MSA-32	32	14	41	8	14	4-M4
MSA-40	40	16.5	48	10	16	4-M5
MSA-50	50	21.5	60	12	20	4-M6

When Ordering

請依照型錄所制訂的產品規格訂購，兩側孔徑可依客戶需在規範內加工製作。

When placing an order, make sure to include product no.

And stock bores (both sides) of product.

MSA - 25 - ø 8 x ø 10

Product No D1 x D2

MSA-C



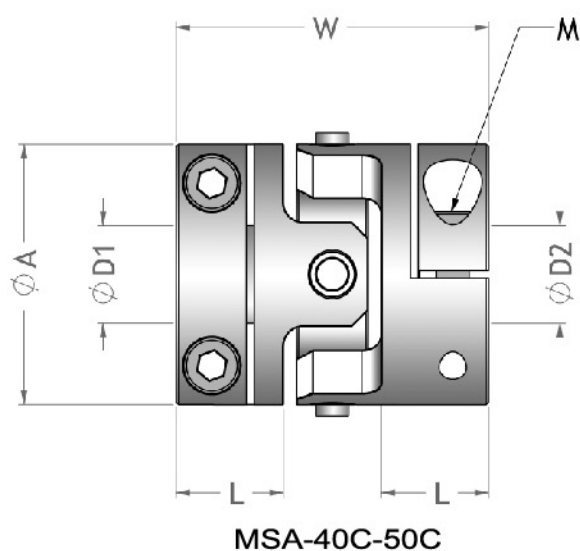
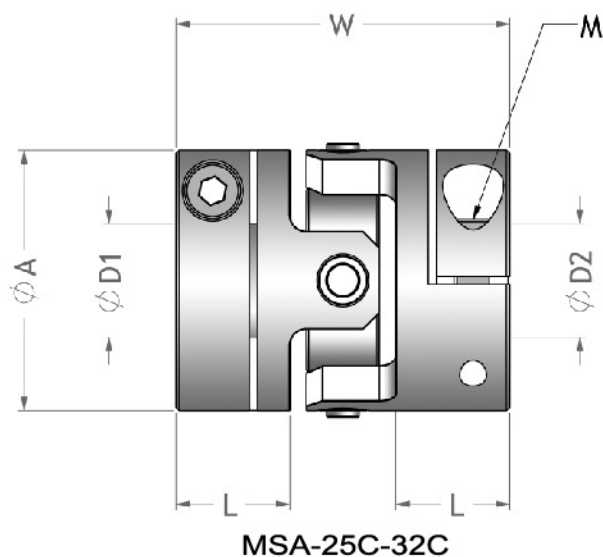
Features

- Slippage between the bush and pin allows for parallel and angular misalignments.
- Minimized backlash achieved through high precision fit of pin and bush.
- Minimized load on shaft caused by misalignments.
- Identical clockwise and counter-clockwise rotational characteristics.
- Finished products featuring two different end bore diameters available in stock.
- Clamp type.
- MSA-C body : Aluminum alloy.

特性

- 軸套和間隔塊的滑動作用，可容許較大的偏心和偏角。
- 固定銷和襯套的高精密嚙合使背隙最小化。
- 偏差所引起的軸心負荷小，可減輕軸心負擔。
- 順、逆時針迴轉特性完全相同。
- 兩端不同孔徑的產品標準化。
- 夾鉗螺絲型固定。
- MSA-C 本體：鋁合金材質。

Set screw type



Specifications

unit : mm

Product No 產品名稱	Rated Torque 常用扭矩 (N.m)	Max. Torque 最大扭矩 (N.m)	Max. Rotational Frequency 最高迴轉數 (min ⁻¹)	Moment* Of Inertia 慣性 (kg.m ²)	Error of Eccentricity 容許偏心率 (mm)	Error of Angularity 容許角偏差 (°)	Error of Shaft End-play 容許軸向偏差 (mm)	Mass** 質量 (g)
MSA-25C	1.2	2.4	6100	3.1x10 ⁻⁶	0.5	3°	-	40
MSA-32C	3.0	6.0	4800	1.1x10 ⁻⁵	0.5	3°	-	81
MSA-40C	6.0	12.0	3800	3.2x10 ⁻⁵	0.5	3°	-	155
MSA-50C	10.0	20.0	3100	9.6x10 ⁻⁵	0.5	3°	-	300

> Max. Bore Moment of Inertia / 最大孔徑時慣性矩

> Max. Bore Mass / 最大孔徑時質量

Dimension

unit : mm

Product No 產品名稱	A	L	W	Stock Bores 標準孔徑 D1xD2(公差 H8)		M
				Min D1	Max D2	
MSA-25C	25	11.5	34	6	10	2-M3
MSA-32C	32	14	41	8	14	2-M4
MSA-40C	40	16.5	48	10	16	4-M5
MSA-50C	50	21.5	60	12	20	4-M6

When Ordering

請依照型錄所制訂的產品規格訂購，兩側孔徑可依客戶需在規範內加工製作。

When placing an order, make sure to include product no.

And stock bores (both sides) of product.

MSA - 40C - ø10 x ø12

Product No D1 x D2

MRC-C / MRCS-C



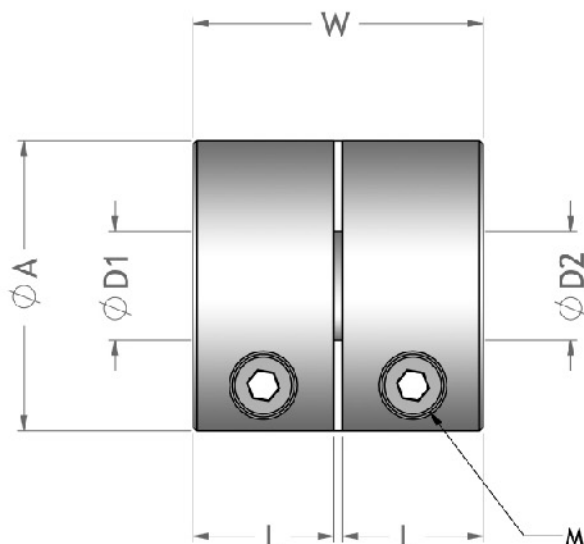
Features

- Ideal one-body metallic spring flexible couplings.
- High torsion stiffness and response.
- Identical clockwise and counter-clockwise rotational characteristics.
- Maintenance-free, oil and chemical resistant.
- Clamp type.
- MRC-C Body : Aluminum alloy.
- MRCS-C Body : Stainless steel.

特性

- 完美單一本體，剛性聯軸器。
- 高扭力、高負荷。
- 順、逆時針迴轉特性完全相同。
- 免保養、抗油、抗化學性。
- 夾鉗螺絲型固定。
- MRC-C 本體：鋁合金材質。
- MRCS-C 本體：不銹鋼材質。

Clamp type



Specifications

unit : mm

Product No 產品名稱	Rated Torque 常用扭矩 (N.m)	Max. Torque 最大扭矩 (N.m)	Max. Rotational Frequency. 最高迴轉數 (min ⁻¹)	Moment* Of Inertia 慣性 (kg.m ²)	Mass** 質量 (g)
MRC-16C	0.3	0.6	9500	2.7x10 ⁻⁷	9.0
MRC-20C	0.5	1.0	7600	7.9x10 ⁻⁷	15.0
MRC-25C	1.1	2.2	6100	2.5x10 ⁻⁶	30.0
MRC-32C	2.0	4.0	4800	7.8x10 ⁻⁶	65.0
MRCS-16C	0.5	1.0	9500	7.5x10 ⁻⁷	18.0
MRCS-20C	1.0	2.0	7600	2.2x10 ⁻⁶	37.0
MRCS-25C	2.1	4.2	6100	6.9x10 ⁻⁶	75.0
MRCS-32C	3.5	7.0	4800	2.4x10 ⁻⁵	162.0

> Max. Bore Moment of Inertia / 最大孔徑時慣性矩

> Max. Bore Mass / 最大孔徑時質量

Dimension

unit : mm

Product No 產品名稱	A	L	W	Stock Bores 標準孔徑 D1xD2(公差 H8)		M
				Min D1	Max D2	
MRC-16C	16	7.5	16	5	6	2-M2.5
MFC-20C	20	9.5	20	6	8	2-M2.5
MRC-25C	25	12	25	8	10	2-M3
MRC-32C	32	15.5	32	10	14	2-M4
MRCS-16C	16	7.5	16	5	6	2-M2.5
MRCS-20C	20	9.5	20	6	8	2-M2.5
MRCS-25C	25	12	25	8	10	2-M3
MRCS-32C	32	15.5	32	10	14	2-M4

When Ordering

請依照型錄所制訂的產品規格訂購，兩側孔徑可依客戶需在規範內加工製作。

When placing an order, make sure to include product no.

And stock bores (both sides) of product.

MRCS - 20C - ø 6 x ø 8

Product No D1 x D2

WTM-C / WTM-CK / WTM-K



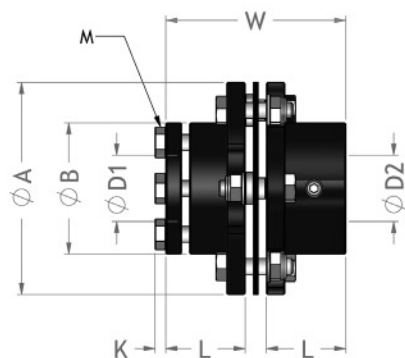
Features

- All steel flexible couplings.
- High rigidity high torque.
- Low moment of inertia backlash-free.
- Suitable to middling large servo system exact transmission.
- Compensating of axial radial and angular shaft misalignments.
- Long service life maintenance-free.
- Clamp type / Setscrew type.
- WTM-type Body : S45C alloy.

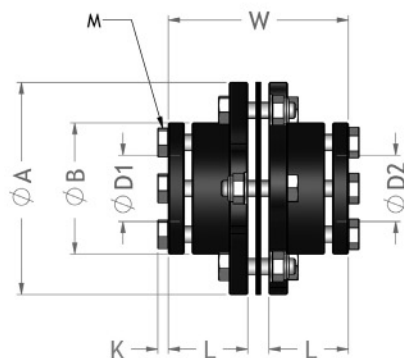
特性

- 一體化全鋼簧片式聯軸器。
- 高剛性、高扭矩。
- 低價性、無背隙。
- 適用中大型伺服馬達精密定位傳動。
- 具軸向、徑向及角度偏差補正功能。
- 免保養、壽命長。
- 夾鉗式固定 / 止付螺絲型固定。
- WTM-type 本體：合金鋼材質。

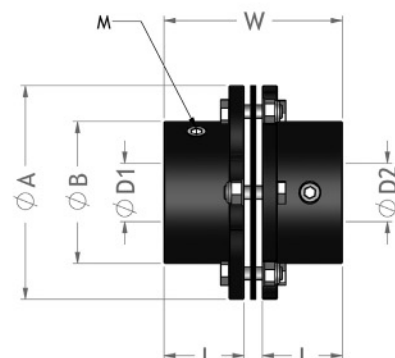
Setscrew type



WTM-CK



WTM-C



WTM-K

Specifications

unit : mm

Product No 產品名稱	Rated Torque 常用扭矩 (N.m)	Max. Torque 最大扭矩 (N.m)	Max. Rotational Frequency 最高迴轉數 (min ⁻¹)	Moment* Of Inertia 慣性 (kg.m ²)	Error of Eccentricity 容許偏心率 (mm)	Error of Angularity 容許角偏差 (°)	Error of Shaft End-play 容許軸向偏差 (mm)
WTM-01C/CK/K	30	60	11000	1.7x10 ⁻⁴	0.15	1°	±0.6
WTM-03C/CK/K	40	80	10700	2.7x10 ⁻⁴	0.15	1°	±0.6
WTM-05C/CK/K	95	190	9300	5.5x10 ⁻⁴	0.20	1°	±0.8
WTM-10C/CK/K	140	280	8400	9.7x10 ⁻⁴	0.20	1°	±1.0
WTM-20C/CK/K	225	450	6700	3.0x10 ⁻³	0.3	1°	±1.2
WTM-40C/CK/K	400	800	5900	5.3x10 ⁻³	0.4	1°	±1.4

> Ma x. Bore Moment of Inertia / 最大孔徑時慣性矩

> Max. Bore Mass / 最大孔徑時質量

Dimension

unit : mm

Product No 產品名稱	A	B	L	W	K	Stock Bores 標準孔徑 D1xD2(公差 H8)		M
						Min D1	Max D2	
WTM-01C/CK	70	43	30	68	6	12	22	4-M6
WTM-03C/CK	80	49.5	30	68	6	15	25	6-M6
WTM-05C/CK	92	62	35	78	6	19	35	6-M6
WTM-10C/CK	102	70	40	88	6	22	45	6-M6
WTM-20C/CK	128	85	48	107	8	35	55	6-M8
WTM-40C/CK	145	100	65	141	8	40	65	8-M8
WTM-01K	70	43	30	68	-	12	22	4-M6
WTM-03K	80	49.5	30	68	-	15	25	4-M8
WTM-05K	92	62	35	78	-	19	35	4-M8
WTM-10K	102	70	40	88	-	22	45	4-M10
WTM-20K	128	85	48	107	-	35	55	4-M12
WTM-40K	145	100	65	141	-	40	65	4-M12

When Ordering

請依照型錄所制訂的產品規格訂購，兩側孔徑可依客戶需在規範內加工製作。

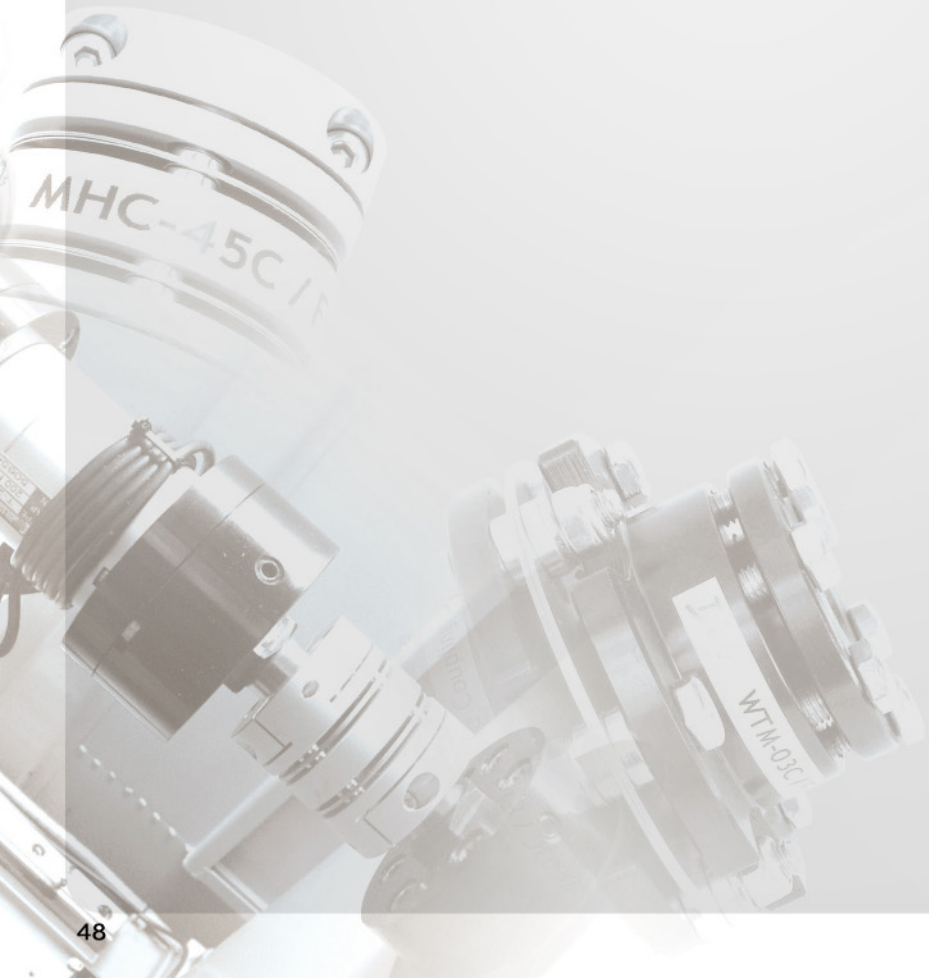
When placing an order, make sure to include product no.

And stock bores (both sides) of product.

WTM - 05C - ø 25 x ø 32

Product No D1 x D2

MEMO



Clamping Power Locks

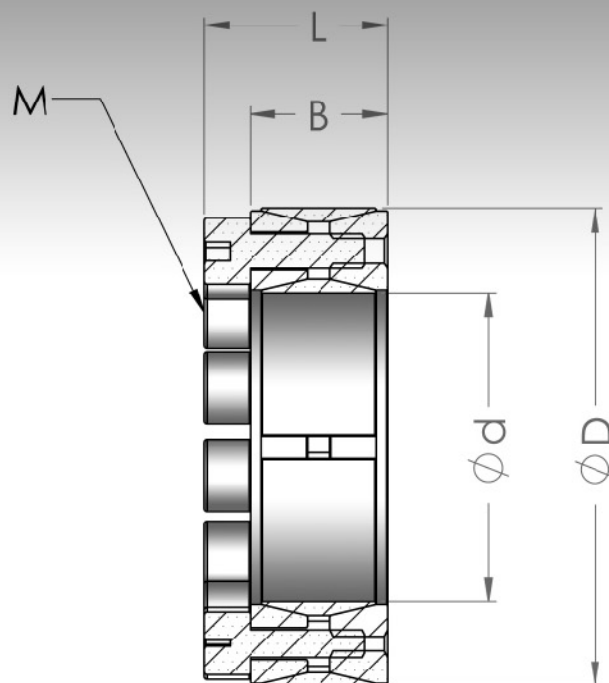
免鍵式軸環系列



GSA



Not self centering



Features

- Not self centering.
- Typical clamping set.
- Axial fastening of the hub.

特性

- 非自動對心型。
- 典型的夾鉗式。
- 輪轂的軸向固定。

When Ordering

請依照型錄所制訂的產品規格訂購。
When placing an order, make sure to include product no.

GSA - 60

Product No / 產品型號

Clamp power lock

unit : mm

Product No	Dimension (mm)				Clamping screws		Transmittable torque or axial force		Surface pressure between clamping sets
	d	D	B	L	M (mm)	Ts (Nm)	T (Nm)	F (KN)	P (N/mm ²)
GSA-20	20	47	20	26	M6	14	270	27	90
GSA-22	22	47	20	26	M6	14	300	27	90
GSA-24	24	50	20	26	M6	14	360	30	95
GSA-25	25	50	20	26	M6	14	380	30	95
GSA-28	28	55	20	26	M6	14	470	34	100
GSA-30	30	55	20	26	M6	14	500	34	100
GSA-32	32	60	20	26	M6	14	650	41	110
GSA-35	35	60	20	26	M6	14	700	41	110
GSA-38	38	65	20	26	M6	14	880	45	110
GSA-40	40	65	20	26	M6	14	950	47	110
GSA-42	42	75	24	32	M8	35	1600	75	130
GSA-45	45	75	24	32	M8	35	1700	75	130
GSA-48	48	80	24	32	M8	35	1800	75	120
GSA-50	50	80	24	32	M8	35	1900	75	120
GSA-55	55	85	24	32	M8	35	2300	85	130
GSA-60	60	90	24	32	M8	35	2500	85	120
GSA-65	65	95	24	32	M8	35	3000	95	130
GSA-70	70	110	28	38	M10	69	4800	130	130
GSA-75	75	115	28	38	M10	69	5000	130	130
GSA-80	80	120	28	38	M10	69	5300	130	130
GSA-85	85	125	28	38	M10	69	6400	150	140
GSA-90	90	130	28	38	M10	69	6500	160	140
GSA-95	95	135	28	38	M10	69	8000	170	140
GSA-100	100	145	33	45	M12	120	9700	190	140
GSA-110	110	155	33	45	M12	120	10600	200	130
GSA-120	120	165	33	45	M12	120	13000	210	130
GSA-130	130	180	38	50	M12	120	18000	270	120
GSA-140	140	190	38	50	M12	120	21000	300	120
GSA-150	150	200	38	50	M12	120	24000	320	120
GSA-160	160	210	38	50	M12	120	28000	350	130
GSA-170	170	225	44	58	M14	190	33000	380	120
GSA-180	180	235	44	58	M14	190	38000	420	120
GSA-190	190	250	52	66	M14	190	46000	480	110
GSA-200	200	260	52	66	M14	190	53000	530	120
GSA-220	220	285	56	72	M16	295	68000	620	120
GSA-240	240	305	56	72	M16	295	86000	710	130

> M : 公制螺絲

> Ts : 螺絲旋緊扭矩

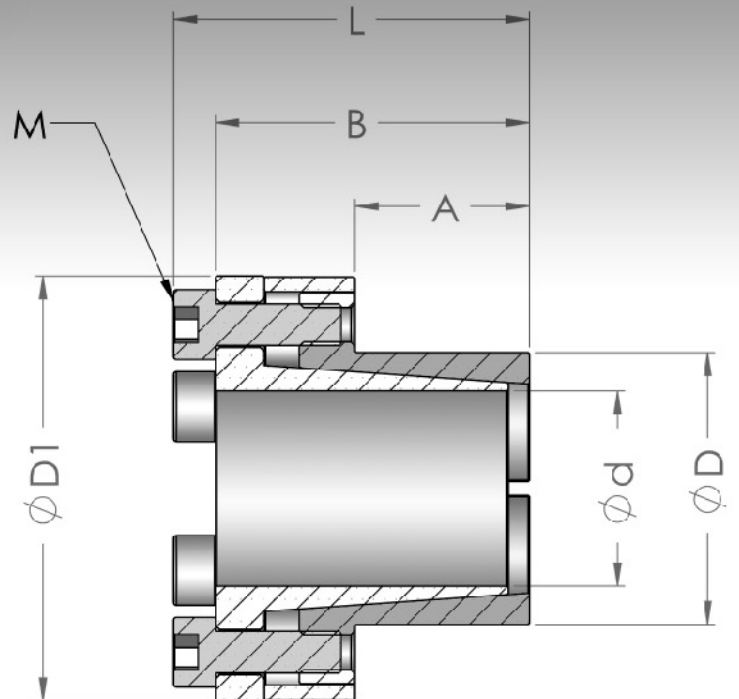
> T.F : 在 Ts 下之傳達扭矩及軸向能力

> P : 輪轂面壓力

GSB



Self centering



Features

- Self centering
- Clamping set specifically suitable for hubs with a small thickness.
- Reduction of costs by saving material.
- Short assembly times.

特性

- 自動對心型。
- 夾鉗式適用於小密度的輪轂。
- 降低成本，節省材料。
- 減短安裝時間。

When Ordering

請依照型錄所制訂的產品規格訂購。
When placing an order, make sure to include product no.

GSB - 35

Product No / 產品型號

Clamp power lock

unit : mm

Product No	Dimension (mm)						Clamping screws		Transmittable torque or axial force		Surface pressure between clamping sets
	d	D	D1	A	B	L	M (mm)	Ts (Nm)	T (Nm)	F (KN)	P (N/mm ²)
GSB-08	8	15	27	12	25	29	M4	5	29	10	205
GSB-09	9	16	28	14	26	30	M4	5	44	10	185
GSB-10	10	16	28	14	26	30	M4	5	49	10	185
GSB-11	11	18	32	14	26	30	M4	5	53	10	185
GSB-12	12	18	32	14	26	30	M4	5	58	10	160
GSB-13	13	23	38	14	26	30	M4	5	63	10	140
GSB-14	14	23	38	14	26	30	M4	5	68	10	130
GSB-15	15	24	45	16	36	42	M6	17	127	17	185
GSB-16	16	24	45	16	36	42	M6	17	136	17	175
GSB-17	17	26	47	18	38	44	M6	17	180	22	190
GSB-18	18	26	47	18	38	44	M6	17	200	22	160
GSB-19	19	27	49	18	38	44	M6	17	220	22	160
GSB-20	20	28	49	18	38	44	M6	17	220	22	170
GSB-22	22	32	54	25	45	51	M6	17	250	22	120
GSB-24	24	34	56	25	45	51	M6	17	270	22	120
GSB-25	25	34	56	25	45	51	M6	17	280	22	120
GSB-28	28	39	61	25	45	51	M6	17	500	35	150
GSB-30	30	41	62	25	45	51	M6	17	530	35	150
GSB-32	32	43	65	30	50	56	M6	17	750	45	150
GSB-35	35	47	69	30	50	56	M6	17	850	48	140
GSB-38	38	50	72	30	50	56	M6	17	930	48	140
GSB-40	40	53	75	30	50	56	M6	17	980	48	130
GSB-42	42	55	78	40	65	73	M8	41	1000	48	130
GSB-45	45	59	85	40	65	73	M8	41	1900	84	130
GSB-48	48	62	87	45	70	78	M8	41	2000	84	140
GSB-50	50	65	92	45	70	78	M8	41	2700	110	130
GSB-55	55	71	98	50	75	83	M8	41	3000	110	130
GSB-60	60	77	104	50	75	83	M8	41	3300	110	130
GSB-65	65	84	111	50	75	83	M8	41	3600	110	130
GSB-70	70	90	119	60	91	101	M10	83	6200	180	130
GSB-75	75	95	126	60	91	101	M10	83	6600	180	130
GSB-80	80	100	131	65	96	106	M10	83	8700	220	130
GSB-85	85	106	137	65	96	106	M10	83	9200	220	130
GSB-90	90	112	143	65	96	106	M10	83	12000	240	130
GSB-95	95	120	153	65	96	106	M10	83	12000	240	130
GSB-100	100	125	162	65	102	114	M12	145	15000	280	130

> M : 公制螺絲

> Ts : 螺絲旋緊扭矩

> T.F : 在 Ts 下之傳達扭矩及軸向能力

> P : 輪轂面壓力

GSC



Not self centering

Features

- Not self centering
- Clamping set specifically suitable for hubs with a small thickness.
- Increase of torque by using several clamping sets in a series.

特性

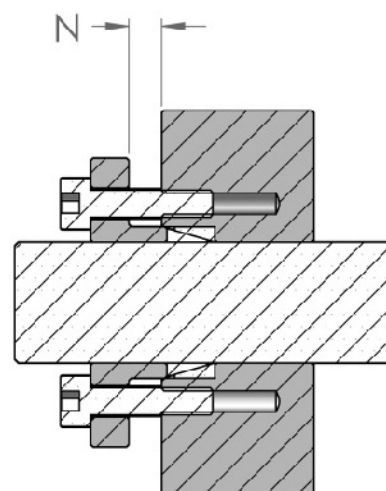
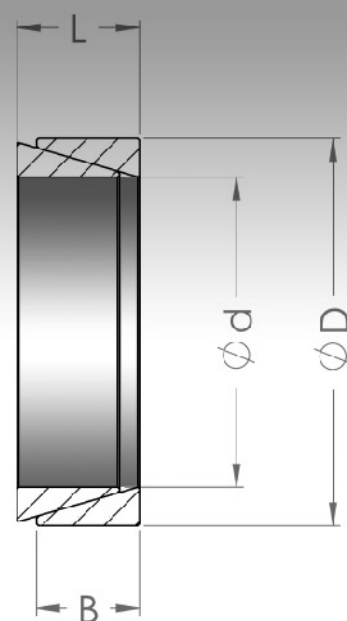
- 非自動對心型。
- 夾鉗式適用於小密度的輪轂。
- 在一系列中使用數個夾鉗式會使增加扭力。

When Ordering

請依照型錄所制訂的產品規格訂購。
When placing an order, make sure to include product no.

GSC - 56

Product No / 產品型號



Clamp power lock

unit : mm

Product No	Dimension (mm)								Transmittable torque or axial force		Surface pressure between clamping sets	
	d	D	L	B	N				T (Nm)	F (KN)	P (N / mm ²)	Fa (Nm)
					1	2	3	4				
GSC-06	6	9	4.5	3.7	2.5	2.5	3	4	2	0.8	115	12
GSC-08	8	11	4.5	3.7	2.5	2.5	3	4	5	1.2	120	18
GSC-10	10	13	4.5	3.7	2.5	2.5	3	4	10	2	120	22
GSC-11	11	14	4.5	3.7	2.5	2.5	3	4	10	2	120	22
GSC-12	12	15	4.5	3.7	2.5	2.5	3	4	11	2	115	23
GSC-13	13	16	4.5	3.7	2.5	2.5	3	4	13	2	110	24
GSC-14	14	18	6.3	5.3	3	4	4	5	22	3	90	26
GSC-15	15	19	6.3	5.3	3	4	4	5	25	3	90	27
GSC-16	16	20	6.3	5.3	3	4	4	5	27	3	90	27
GSC-17	17	21	6.3	5.3	3	4	4	5	30	3	90	28
GSC-18	18	22	6.3	5.3	3	4	4	5	32	3	90	30
GSC-19	19	24	6.3	5.3	3	4	4	5	40	4	90	33
GSC-20	20	25	6.3	5.3	3	4	4	5	44	4	90	34
GSC-22	22	26	6.3	5.3	3	4	4	5	58	4	90	35
GSC-24	24	28	6.3	5.3	3	4	4	5	68	6	100	37
GSC-25	25	30	6.3	5.3	3	4	4	5	75	6	100	40
GSC-28	28	32	6.3	5.3	3	4	4	5	90	6	100	40
GSC-30	30	35	6.3	5.3	3	4	4	5	100	7	100	40
GSC-32	32	36	6.3	5.3	3	4	4	5	120	7	100	50
GSC-35	35	40	7	6	3	4	4	5	160	9	100	40
GSC-38	38	44	7	6	4	5	5	6	230	10	100	60
GSC-40	40	45	8	6.6	4	5	5	6	230	11	100	70
GSC-42	42	48	8	6.6	4	5	5	6	260	12	100	70
GSC-45	45	52	10	8.6	4	5	5	6	390	17	100	110
GSC-48	48	55	10	8.6	4	5	5	6	430	18	100	110
GSC-50	50	57	10	8.6	4	5	5	6	470	19	110	110
GSC-55	55	62	10	10.4	4	5	5	6	580	21	110	120
GSC-56	56	64	12	10.4	4	5	6	7	790	25	110	150
GSC-60	60	68	12	10.4	4	5	6	7	840	28	110	160
GSC-65	65	73	12	10.4	4	5	6	7	1000	30	100	160
GSC-70	70	79	14	12.2	4	5	6	7	1300	38	100	200
GSC-75	75	84	14	12.2	4	5	6	7	1500	41	100	220
GSC-80	80	91	17	15	5	6	7	8	2100	54	100	300
GSC-90	90	101	17	15	5	6	7	8	2700	61	100	320
GSC-100	100	114	21	18.7	5	6	8	9	4200	84	100	440

> M : 公制螺絲

> Ts : 螺絲旋緊扭矩

> T.F : 在 Ts 下之傳達扭矩及軸向能力

> P : 輪轂面壓力

GSD



Self centering

Features

- Self centering
- Clamping element for universal use.
- Wide range of applications.
- Low-cost solution with average to high torques.

特性

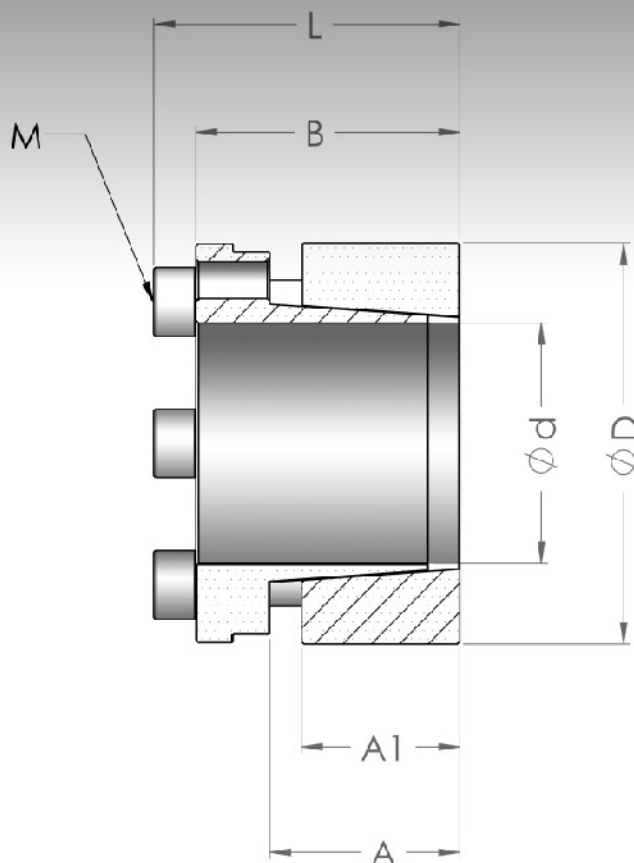
- 自動對心型。
- 廣泛的用於夾鉗式零件。
- 應用於廣泛的範圍。
- 平均高扭力的低成本解決方案。

When Ordering

請依照型錄所制訂的產品規格訂購。
When placing an order, make sure to include product no.

GSD - 90

Product No / 產品型號



Clamp power lock

unit : mm

Product No	Dimension (mm)						Clamping screws		Transmittable torque or axial force		Surface pressure between clamping sets
	d	D	A	A1	B	L	M (mm)	Ts (Nm)	T (Nm)	F (KN)	P (N/mm ²)
GSD-20	20	47	31	26	42	48	M6	17	550	55	100
GSD-22	22	47	31	26	42	48	M6	17	600	55	100
GSD-24	24	50	31	26	42	48	M6	17	660	55	100
GSD-25	25	50	31	26	42	48	M6	17	680	55	100
GSD-28	28	55	31	26	42	48	M6	17	720	55	100
GSD-30	30	55	31	26	42	48	M6	17	820	55	100
GSD-32	32	60	31	26	42	48	M6	17	1400	80	130
GSD-35	35	60	31	26	42	48	M6	17	1400	80	130
GSD-38	38	65	31	26	42	48	M6	17	1600	80	130
GSD-40	40	65	31	26	42	48	M6	17	1600	110	130
GSD-42	42	75	36	30	50	58	M8	41	2500	110	130
GSD-45	45	75	36	30	50	58	M8	41	2500	150	130
GSD-48	48	80	36	30	50	58	M8	41	3700	150	170
GSD-50	50	80	36	30	50	58	M8	41	3700	150	170
GSD-55	55	85	36	30	50	58	M8	41	4100	150	160
GSD-60	60	90	36	30	50	58	M8	41	4500	160	160
GSD-65	65	95	36	30	50	58	M8	41	4500	160	150
GSD-70	70	110	46	39	60	70	M10	83	8400	240	150
GSD-75	75	115	46	39	60	70	M10	83	8400	240	140
GSD-80	80	120	46	39	60	70	M10	83	9600	250	140
GSD-85	85	125	46	39	60	70	M10	83	11000	250	150
GSD-90	90	130	46	39	60	70	M10	83	13000	300	150
GSD-95	95	135	46	39	60	70	M10	83	13000	300	150
GSD-100	100	145	52	46	68	80	M12	145	17500	350	150
GSD-110	110	155	52	46	68	80	M12	145	20000	300	150
GSD-120	120	165	52	46	68	80	M12	145	21300	330	150
GSD-130	130	180	52	46	68	80	M12	145	28000	350	150
GSD-140	140	190	58.5	51	76	90	M14	190	30400	350	150
GSD-150	150	200	58.5	51	76	90	M14	190	39000	400	160
GSD-160	160	210	58.5	51	76	90	M14	190	41700	400	170
GSD-170	170	225	58.5	51	76	90	M14	190	52000	460	160
GSD-180	180	235	58.5	51	76	90	M14	190	55000	460	170

> M : 公制螺絲

> Ts : 螺絲旋緊扭矩

> T.F : 在 Ts 下之傳達扭矩及軸向能力

> P : 輪轂面壓力

GSK / GSMA



Self centering

Features

- Self centering
- Clamping element for universal use.
- Wide range of applications.
- Low-cost solution with average to high torques.

特性

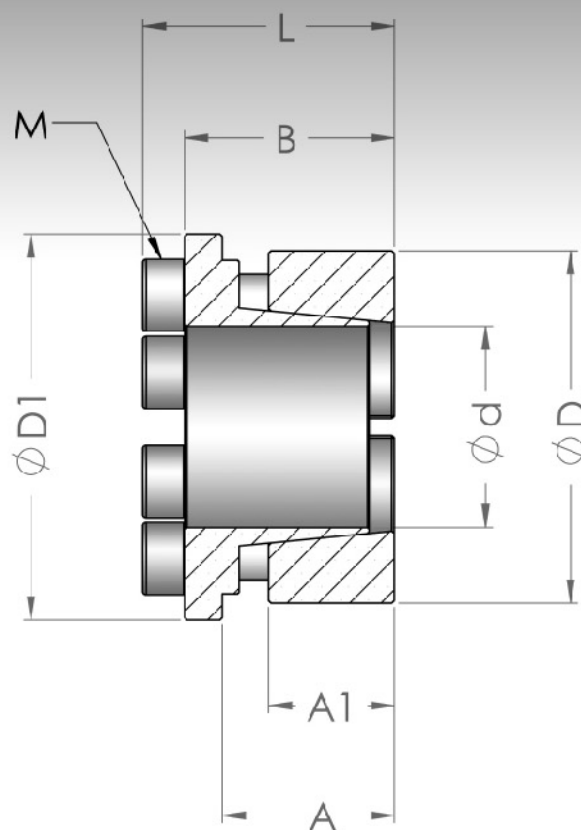
- 自動對心型。
- 廣泛的用於夾鉗式零件。
- 應用於廣泛的範圍。
- 平均高扭力的低成本解決方案。

When Ordering

請依照型錄所制訂的產品規格訂購。
When placing an order, make sure to include product no.

GSK - 16

Product No / 產品型號



Clamp power lock

unit : mm

Product No	Dimension (mm)							Clamping screws		Transmittable torque or axial force		Surface pressure between clamping sets
	d	D	D1	A	A1	B	L	M (mm)	Ts (Nm)	T (Nm)	F (KN)	P (N/mm ²)
GSK-10	10	23	25.5	14.5	10	16.5	20.5	M4	4.8	31.4	5.96	80
GSK-11	11	24	26.5	14.5	10	16.5	20.5	M4	4.8	34.3	5.96	77
GSK-12	12	26	28.5	14.5	10	16.5	20.5	M4	4.8	50.3	7.94	95
GSK-14	14	28	30.5	17.5	12	20	24	M4	4.8	73.3	9.90	92
GSK-15	15	29	31.5	17.5	12	20	24	M4	4.8	94.1	11.9	107
GSK-16	16	30	32.5	17.5	12	20	24	M4	4.8	101	11.9	103
GSK-17	17	31	33.5	17.5	12	20	24	M4	4.8	107	11.9	100
GSK-18	18	32	34.5	17.5	12	20	24	M4	4.8	113	11.9	97
GSK-19	19	33	35.5	17.5	12	20	24	M4	4.8	120	11.9	94
GSMA-20	20	38	42	21.1	15.3	24.1	29.1	M5	8.8	21.6	21.6	130
GSMA-22	22	40	44	21.1	15.3	24.1	29.1	M5	8.8	25.5	22.6	117
GSMA-24	24	42	46	22.1	16.3	25.1	30.1	M5	8.8	36.3	29.9	111
GSMA-25	25	43	47	23.1	17.3	26.1	31.1	M5	8.8	39.2	31.4	102
GSMA-28	28	46	50	23.1	17.3	26.6	31.6	M5	8.8	44.1	31.4	119
GSMA-30	30	48	52	23.1	17.3	26.6	31.6	M5	8.8	50.0	33.3	114
GSMA-32	32	50	54	24.1	18.3	27.6	32.6	M5	8.8	53.0	33.3	104
GSMA-35	35	57	62	26	19.5	30	36	M6	15.7	88.3	47.6	114
GSMA-38	38	60	65	26.5	20	30.5	36.5	M6	15.7	102.0	49.4	132
GSMA-40	40	62	67	27	20.5	31	37	M6	15.7	107.9	50.3	124
GSMA-42	42	64	69	27	20.5	31	37	M6	15.7	115.7	51.5	120
GSMA-45	45	67	72	27.5	21	31.5	37.5	M6	15.7	128.5	56.9	112
GSMA-48	48	70	75	27.5	21	32	38	M6	15.7	140.2	58.4	129
GSMA-50	50	72	77	28	21.5	32.5	38.5	M6	15.7	170.5	68.2	143
GSMA-55	55	77	83	28	21.5	32.5	38.5	M6	15.7	188.3	68.5	133
GSMA-60	60	82	87	28.5	22	33.5	39.5	M6	15.7	210.8	68.7	131
GSMA-65	65	87	92	28.5	22	33.5	39.5	M6	15.7	223.6	68.7	124
GSMA-70	70	97	103	31.1	24	36.1	44.1	M8	37.3	328.5	93.2	169
GSMA-75	75	102	108	31.1	24	36.1	44.1	M8	37.3	374.6	99.1	172
GSMA-80	80	107	113	32.1	25	37.1	45.1	M8	37.3	412.9	103	158
GSMA-85	85	112	118	32.1	25	37.1	45.1	M8	37.3	452.1	106	151

> M : 公制螺絲

> Ts : 螺絲旋緊扭矩

> T.F : 在 Ts 下之傳達扭矩及軸向能力

> P : 輪轆面壓力

GSDS



Self centering

Features

- Self centering.
- Clamping set for universal applications.
- Short dimensions.
- Short assembly times.

特性

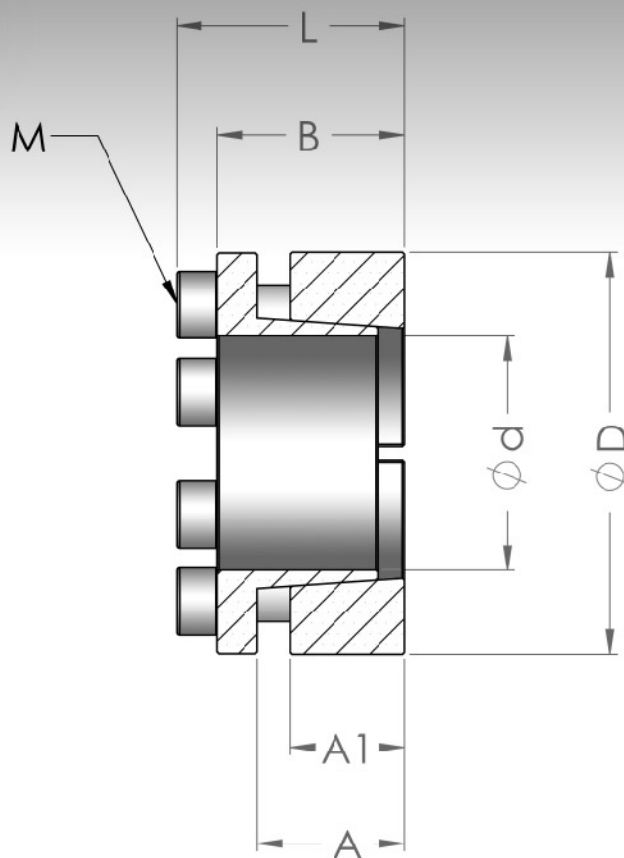
- 自動對心型。
- 廣泛的用於夾鉗式零件。
- 短尺寸。
- 減短安裝時間。

When Ordering

請依照型錄所制訂的產品規格訂購。
When placing an order, make sure to include product no.

GSDS - 30

Product No / 產品型號



Clamp power lock

unit : mm

Product No	Dimension (mm)						Clamping screws		Transmittable torque or axial force		Surface pressure between clamping sets
	d	D	A	A1	B	L	M (mm)	Ts (Nm)	T (Nm)	F (KN)	P (N/mm ²)
GSDS-06	6	19	10.5	8	13.5	16.5	M3	2.3	6.2	4	53
GSDS-08	8	22	13	10	17	21	M3	3.9	18	4.7	70
GSDS-09	9	23	13	10	17	21	M3	3.9	21	4.7	68
GSDS-10	10	24	13	10	17	21	M3	3.9	30	6.2	87
GSDS-11	11	25	13	10	17	21	M3	3.9	34	6.2	84
GSDS-12	12	26	13	10	17	21	M3	3.9	47	7.8	100
GSDS-13	13	27	13	10	17	21	M3	3.9	50	7.8	97
GSDS-14	14	31	16	12.5	21	26	M4	8	70	10	87
GSDS-15	15	32	16	12.5	21	26	M4	8	75	10	84
GSDS-16	16	33	16	12.5	21	26	M4	8	80	10	81
GSDS-17	17	34	16	12.5	21	26	M4	8	105	12.5	99
GSDS-18	18	35	16	12.5	21	26	M4	8	110	12.5	96
GSDS-19	19	47	22	17	28	34	M6	14	290	30	100
GSDS-20	20	47	22	17	28	34	M6	14	320	32	100
GSDS-22	22	47	22	17	28	34	M6	14	320	32	100
GSDS-24	24	50	22	17	28	34	M6	14	360	32	100
GSDS-25	25	50	22	17	28	34	M6	14	420	34	100
GSDS-28	28	55	22	17	28	34	M6	14	500	34	100
GSDS-30	30	55	22	17	28	34	M6	14	520	34	100
GSDS-32	32	60	22	17	28	34	M6	14	770	48	110
GSDS-35	35	60	22	17	28	34	M6	14	840	48	110
GSDS-38	38	65	22	17	28	34	M6	14	910	48	110
GSDS-40	40	65	22	17	28	34	M6	14	960	48	110
GSDS-42	42	75	25	20	33	41	M8	35	1000	65	110
GSDS-45	45	75	25	20	33	41	M8	35	1500	65	110
GSDS-48	48	80	25	20	33	41	M8	35	2000	85	140
GSDS-50	50	80	25	20	33	41	M8	35	2100	85	140
GSDS-55	55	85	25	20	33	41	M8	35	2500	95	140
GSDS-60	60	90	25	20	33	41	M8	35	2700	90	130
GSDS-65	65	95	25	20	33	41	M8	35	3200	100	140
GSDS-70	70	110	30	24	40	50	M10	70	4900	140	140
GSDS-75	75	115	30	24	40	50	M10	70	5300	140	130
GSDS-80	80	120	30	24	40	50	M10	70	5600	140	130
GSDS-85	85	125	30	24	40	50	M10	70	6700	160	130
GSDS-90	90	130	30	24	40	50	M10	70	7100	160	130
GSDS-95	95	135	30	24	40	50	M10	70	9100	195	135
GSDS-100	100	145	32	26	44	56	M12	125	10200	200	150
GSDS-110	110	155	32	26	44	56	M12	125	10600	200	150
GSDS-120	120	165	32	26	44	56	M12	125	13000	216	140
GSDS-130	130	180	40	34	54	64	M12	125	18900	290	135
GSDS-140	140	190	40	34	54	68	M14	190	20500	333	125
GSDS-150	150	200	40	34	54	68	M14	190	25000	362	120
GSDS-160	160	210	40	34	54	68	M14	190	29000	362	130
GSDS-170	170	225	50	44	64	78	M14	190	34000	400	135
GSDS-180	180	235	50	44	64	78	M14	190	36000	400	120
GSDS-190	190	250	50	44	64	78	M14	190	47500	500	115
GSDS-200	200	265	50	44	64	78	M14	190	50000	500	140

> M : 公制螺絲

> Ts : 螺絲旋緊扭矩

> T.F : 在 Ts 下之傳達扭矩及軸向能力

> P : 輪轂面壓力

GSES



Self centering

Features

- Self centering
- Clamping set for universal applications.
- Short dimensions.
- Short assembly times.

特性

- 自動對心型。
- 廣泛的用於夾鉗式零件。
- 短尺寸。
- 減短安裝時間。

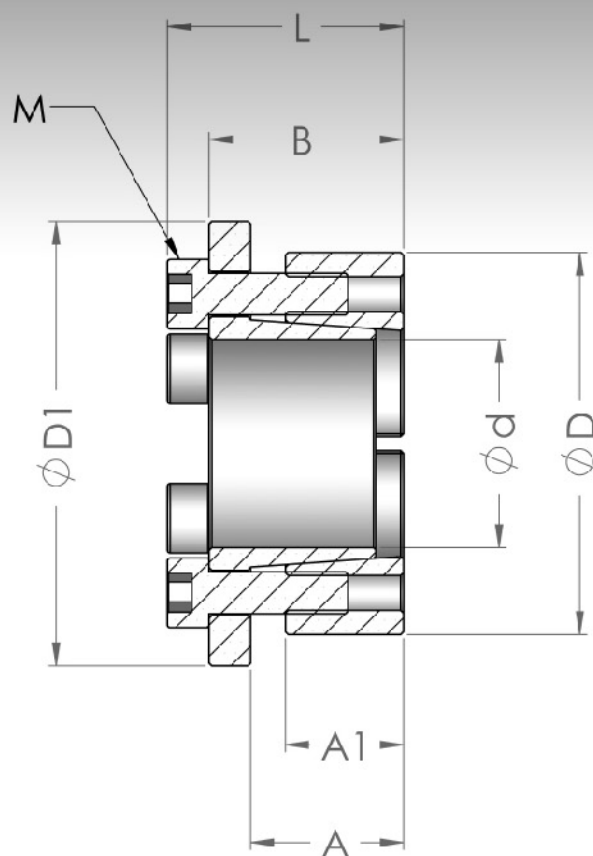
When Ordering

請依照型錄所制訂的產品規格訂購。

When placing an order, make sure to include product no.
And stock bores (both sides) of product.

GSES - 70

Product No / 產品型號



Clamp power lock

unit : mm

Product No	Dimension (mm)							Clamping screws		Transmittable torque or axial force		Surface pressure between clamping sets
	d	D	D1	A	A1	B	L	M (mm)	Ts (Nm)	T (Nm)	F (KN)	P (N/mm ²)
GSES-06	6	19	21.5	10.5	8	13.5	16.5	M3	3	6.2	4	53
GSES-08	8	22	25	13	10	17	21	M4	5	18	4.7	70
GSES-09	9	23	26	13	10	17	21	M4	5	21	4.7	68
GSES-10	10	24	27	13	10	17	21	M4	5	30	6.2	87
GSES-11	11	25	28	13	10	17	21	M4	5	34	6.2	84
GSES-12	12	26	29	13	10	17	21	M4	5	47	7.8	100
GSES-13	13	27	30	13	10	17	21	M4	5	50	7.8	97
GSES-14	14	31	34	16	12.5	21	26	M5	11	70	10	87
GSES-15	15	32	35	16	12.5	21	26	M5	11	75	10	84
GSES-16	16	33	36	16	12.5	21	26	M5	11	80	10	81
GSES-17	17	34	37	16	12.5	21	26	M5	11	105	12.5	99
GSES-18	18	35	38	16	12.5	21	26	M5	11	110	12.5	96
GSES-19	19	47	56	22	17	28	34	M6	17	290	30	100
GSES-20	20	47	56	22	17	28	34	M6	17	320	32	100
GSES-22	22	47	56	22	17	28	34	M6	17	320	32	100
GSES-24	24	50	59	22	17	28	34	M6	17	360	32	100
GSES-25	25	50	59	22	17	28	34	M6	17	420	34	100
GSES-28	28	55	64	22	17	28	34	M6	17	500	34	100
GSES-30	30	55	64	22	17	28	34	M6	17	520	34	100
GSES-32	32	60	69	22	17	28	34	M6	17	770	48	110
GSES-35	35	60	69	22	17	28	34	M6	17	840	48	110
GSES-38	38	65	74	22	17	28	34	M6	17	910	48	110
GSES-40	40	65	74	22	17	28	34	M6	17	960	48	110
GSES-42	42	75	84	25	17	33	41	M8	41	1000	65	110
GSES-45	45	75	84	25	20	33	41	M8	41	1500	65	110
GSES-48	48	80	89	25	20	33	41	M8	41	2000	85	140
GSES-50	50	80	89	25	20	33	41	M8	41	2100	85	140
GSES-55	55	85	94	25	20	33	41	M8	41	2500	95	140
GSES-60	60	90	99	25	20	33	41	M8	41	2700	90	130
GSES-65	65	95	104	25	20	33	41	M8	41	3200	100	140
GSES-70	70	110	119	30	24	40	50	M10	83	4900	140	140
GSES-75	75	115	124	30	24	40	50	M10	83	5300	140	130
GSES-80	80	120	129	30	24	40	50	M10	83	5600	140	130
GSES-85	85	125	134	30	24	40	50	M10	83	6700	160	130
GSES-90	90	130	139	30	24	40	50	M10	83	7100	160	130
GSES-95	95	135	144	30	24	40	50	M10	83	9100	195	135
GSES-100	100	145	154	32	26	44	56	M12	145	10200	200	150
GSES-110	110	155	164	32	26	44	56	M12	145	10600	200	150
GSES-120	120	165	174	32	26	44	56	M12	145	13000	216	140
GSES-130	130	180	189	40	34	54	64	M12	145	18900	290	135
GSES-140	140	190	199	40	34	54	68	M14	230	20500	333	125
GSES-150	150	200	209	40	34	54	68	M14	230	25000	362	120
GSES-160	160	210	219	40	34	54	68	M14	230	29000	362	130
GSES-170	170	225	234	50	44	64	78	M14	230	34000	400	135
GSES-180	180	235	244	50	44	64	78	M14	230	36000	400	120
GSES-190	190	250	259	50	44	64	78	M14	230	47500	500	115
GSES-200	200	260	269	50	44	64	78	M14	230	50000	500	140

> M : 公制螺絲

> Ts : 螺絲旋緊扭矩

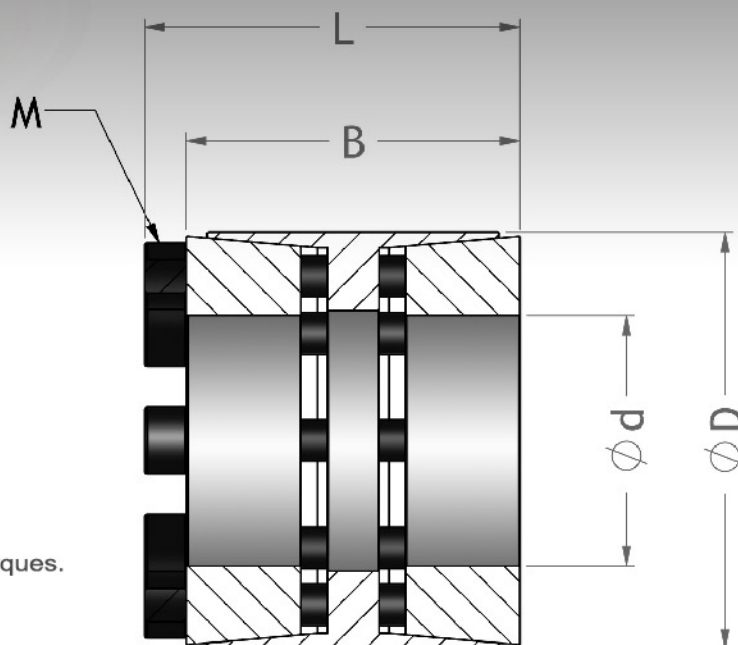
> T.F : 在 Ts 下之傳達扭矩及軸向能力

> P : 輪轂面壓力

GSF



Self centering



Features

- Self centering
- High torsion stiffness and response.
- Clamping element for universal use.
- Wide range of applications.
- Low-cost solution with average to high torques.

特性

- 自動對心型。
- 高扭力、高負荷。
- 廣泛的用於夾鉗式零件。
- 應用於廣泛的範圍。
- 平均高扭力的低成本解決方案。

When Ordering

請依照型錄所制訂的產品規格訂購。

When placing an order, make sure to include product no.

GSF - 80

Product No / 產品型號

Clamp power lock

unit : mm

Product No	Dimension (mm)				Clamping screws		Transmittable torque or axial force		Surface pressure between clamping sets
	d	D	B	L	M (mm)	Ts (Nm)	T (Nm)	F (KN)	P (N/mm ²)
GSF-25	25	50	45	51	M6	17	900	70	90
GSF-28	28	55	45	51	M6	17	940	70	90
GSF-30	30	55	45	51	M6	17	1100	70	90
GSF-32	32	60	45	51	M6	17	1300	70	110
GSF-35	35	60	45	51	M6	17	1600	90	110
GSF-38	38	65	45	51	M6	17	2400	90	110
GSF-40	40	65	45	51	M6	17	2400	120	110
GSF-42	42	75	45	51	M8	41	3300	150	140
GSF-45	45	75	45	51	M8	41	3300	150	140
GSF-48	48	80	64	72	M8	41	4200	160	130
GSF-50	50	80	64	72	M8	41	4200	160	130
GSF-55	55	85	64	72	M8	41	4800	170	120
GSF-60	60	90	64	72	M8	41	6200	200	120
GSF-65	65	95	64	72	M8	41	6900	210	130
GSF-70	70	110	78	88	M10	85	11500	330	130
GSF-75	75	115	78	88	M10	85	12500	330	130
GSF-80	80	120	78	88	M10	85	14500	360	130
GSF-85	85	125	78	88	M10	85	15500	400	130
GSF-90	90	130	78	88	M10	85	18100	400	130
GSF-95	95	135	78	88	M10	85	19500	400	130
GSF-100	100	145	100	112	M12	150	26500	500	130
GSF-110	110	155	100	112	M12	150	31000	600	110
GSF-120	120	165	100	112	M12	150	40000	660	120
GSF-130	130	180	116	130	M14	230	53000	800	130
GSF-140	140	190	116	130	M14	230	64000	900	110
GSF-150	150	200	116	130	M14	230	74000	1000	110
GSF-160	160	210	116	130	M14	230	84000	1050	110
GSF-170	170	225	146	162	M16	230	108000	1300	120
GSF-180	180	235	146	162	M16	230	121000	1300	120
GSF-90	190	250	146	162	M16	230	133000	1400	130
GSF-200	200	260	146	162	M16	230	144000	1400	130

> M : 公制螺絲

> Ts : 螺絲旋緊扭矩

> T.F : 在 Ts 下之傳達扭矩及軸向能力

> P : 輪轂面壓力

Alignment Adjustment

偏差調整

- > Flexible couplings transmit torque and rotational angle while absorbing misalignment. When the misalignment exceeds allowable values, vibration may result or the life of the coupling maybe come shortened. Make sure to adjust the alignment accordingly.

撓性聯軸器可傳遞扭矩和迴轉角度，同時吸收軸的安裝偏差。當安裝偏差超過容許值時可能會產生振動或導致聯軸器的壽命縮短。因此要確保偏差的調整適當。

- > The maximum misalignment listed is the allowable value when only one of the misalignment exists. In case two or more misalignments exist at the same time, the allowable values will be less than 1/2 of the maximum misalignment listed in the specification tables.

本型錄所列之最大偏差容許值是指只有一種偏差存在的情況下。當兩種或更多種偏差同時存在時，容許值應低於規格表中最大偏差的 1/2。

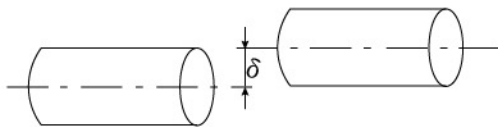
- > There are three types of shaft misalignment, namely in terms of parallel misalignment and shaft end play. Adjust the alignment to be below allowable values listed in the specification table of each product listed in the catalogue (where applicable).

軸的偏差有三種，分別是徑向偏差、角向偏差和軸向偏差。請調整偏差，使其低於本型錄提供的產品規格表中列出的容許值。

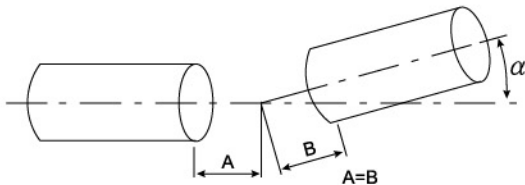
- > Misalignments are sometimes caused not only by equipment assembly, but also by vibration, heat expansion, etc. during operation. Therefore, it is recommended to be below 1/3 of maximum values.

偏差並不只發生在設備裝配，工作過程中的振動、熱膨脹、軸承磨損等都會引起偏差。因此，建議將軸向偏差調整至低於最大值的 1/3。

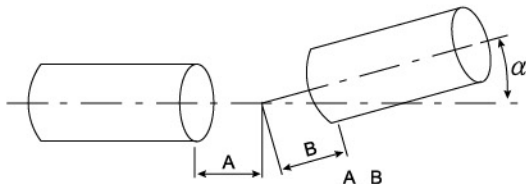
偏 心 \ Parallel Offset Misalignment



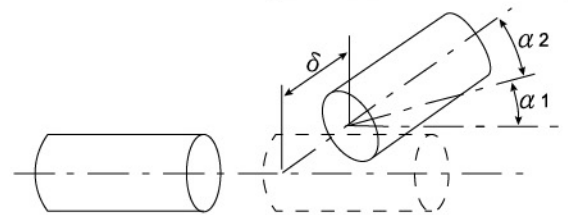
偏 心 (中心一致) \ Symmetrical Angular Misalignment



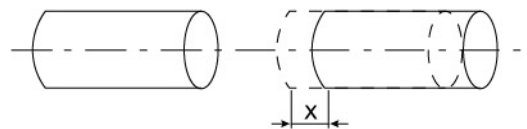
偏 角 (中心不一致) \ Non-Symmetrical Angular Misalignment



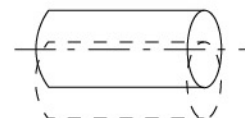
偏 心 · 偏 角 的 複 合 \ Combined Angular Offset Misalignment



軸 端 部 位 差 \ End-Play



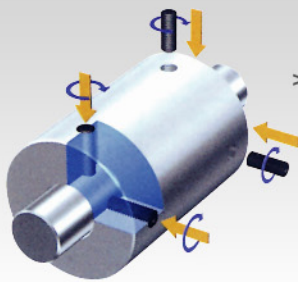
振 動 \ Run Out



Attachment to Shaft

固定方式

There type of couplings are available for attachment on a shaft, namely the Setscrew, Clamp, and keyway type.



> Setscrew type

This low-cost type features the most conventional attachment.

緊固止付螺絲型

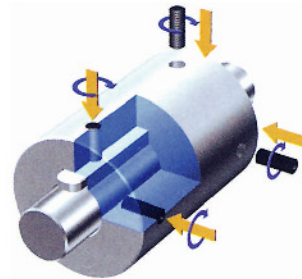
這種低成本類型是最傳統的固定方式。然而，螺栓的前端與軸心直接接觸，可能會造成軸心的損傷或拆卸困難。

> Keyway type

This type, which like the setscrew type features the most conventional attachment, is used for transmitting relatively high torques. Setscrews are applied for preventing shift towards the axial direction.

鍵槽型

這種類型與禁錮螺絲型一樣，是最傳統的固定方式，適合較高扭力矩的傳動。為防止軸向移動，通常與緊固螺絲型，夾持型併用。



> Clamp type

This type become clamped on the shaft by the tightening of the socket screws. Attachment and removal is easy, and no shaft damage results.

夾鉗螺絲型

利用沉頭螺栓鎖緊的力量來始狹縫收縮，而將軸心緊緊夾持住。固定和拆卸方便，而且不會造成軸心的損壞。

Note

For safe, please read the followings carefully, and keep this catalog so that you can review these important points when necessary.

Danger

The following incorrect use me lead to death or serious injury.

- > For safe operation, couplings and other rotational parts must be protected by covers. You might be injured if you touch the products during operation.
- > Safety devices must be equipped to prevent danger.
- > Electrical power must be off during attachment and removal process.
- > Setscrews or cap screws should be properly tightened using a torque driver or torque wrench.
- > The product must not be operated at rotational speeds beyond the max. rotational frequency.

Caution

The following incorrect use may lead to physical injury or substantial loss.

- > Operate the product within the values of allowable misalignment. Operation under misalignment exceeding allowable values may result in the damage of the couplings, and adversely affect the systems in which these couplings are used.
- > Torque generated during continuous operation must not exceed the rated torque. If not, the couplings may be damaged, or adversely affect the systems in the which these couplings are used.
- > For fastening, do not use other screws (setscrews or cao screws) specified by us.
- > Do not operate under an environment which adversely affects the product.
- > Stop the rotation machine immediately if you hear an abnormal noise from it. Proceed to check the machine for misalignment, whether or not shaft are in contact other, loose screws, etc.
- > If you are using a rotation machine that comes under significant load fluctuation, apply an adhesive on screws to prevent them from becoming loose, or use a coupling one rank above.
- > When disposing, ask specialists for disposal of this kind of product in order not to harm the environment.
- > Do not touch the coupling just after finishing operation. You heat inducted from the system in which the couplings are used.

備註

為安全工作，請仔細閱讀以下部分，並保存說明書，以便需要的時候再查看這些要點。

危險

以下使用錯誤可能導致生命危險或嚴重傷害。

- > 為安全工作，聯軸器和其他旋轉件必須由外罩保護。如果您碰觸這些工作中的部件，可能會受到傷害。
- > 為防止危險，必須安裝防護裝置。
- > 安裝和拆卸時必須切斷電源。
- > 緊固螺栓和沉頭螺栓應使用起子、板手或扭力板手以適當的力量鎖緊。
- > 產品的工作轉速不能超過最大轉速。

警告

下列使用錯誤可能導致身體傷害或財產損失。

- > 請在容許偏差範圍內工作。在偏差高過於容許值工作，可能會導致聯軸器的損壞，並可能對使用聯軸器系統造成不利影響。
- > 連續工作產生的扭矩不能超過額定扭矩。否則聯軸器可能會受到損壞，或可能對使用聯軸器系統造成不利影響。
- > 緊固時，使用合乎規範的螺栓（緊固螺栓和沉頭螺栓），而不要使用其他產品。
- > 不要在對產品產生不利影響的環境下工作。
- > 如果聽到非正常噪音，請立刻停止旋轉機械工作。檢查機械的偏差、軸是否相互接觸干涉、螺栓是否鬆脫等。
- > 如果您使用的旋轉機械在負荷變化比較大的情況下工作，請在螺栓上使用防鬆膠防止其脫落，或使用大一型號的聯軸器。
- > 廢棄處理時，請依分類來處理這類產品，以免對環境造成破壞。
- > 剛完成工作後，不要觸碰聯軸器，你可能會被使用聯軸器的系統的高溫燙傷。

Customized couplings

特殊規格



- > In case standard coupling do not fit your application, customized couplings are available.
- > We are ready to manufacture customized couplings to satisfy your application requirements, such as special bores, keyways, surface treatment, dimensional configurational and material specifications.
- > 在標準聯軸器不能滿足您的需求時，可訂製特殊規格的聯軸器。
- > 我們能製造訂製的聯軸器來滿足您的需求，如特殊的孔徑、鍵槽、表面處理、尺寸、結構和材質。

Adjustment of torque capacity in high temperature applications

- > MTC, MFL, include elastomer or plastic parts.
- > These models must be used operational temperature range of each model as indicated in this catalog.
- > If the ambient temperature 30°C (86 °F), the values of max. torque and rated torque should be multiplied by values of the service factors listble in table below.

高溫應用時的扭矩承載調節

- > MTC / MFL 系列的產品包含橡膠或塑膠零件。
- > 這些型號必須在本型錄指示的各型號工作溫度範圍內使用。
- > 如果環境溫度超過 30°C，最大扭矩和額定扭矩乘以下表列出的係數加以補正。

Ambient Temperature(環境溫度)	Service Factor(補正係數)
-20°C ~ 30 °C	1.00
30°C ~ 40 °C	0.80
40°C ~ 60 °C	0.70
60°C ~ 100 °C	0.55

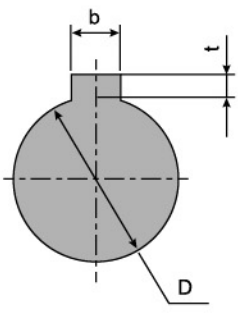
一般馬達規格一覽表 Motor specification

出力 OUTPUT		2 極 2-POLE			4 極 4-POLE			6 極 6-POLE			8 極 8-POLE		
KW	HP	軸徑 SHAFT DIA mm	扭力 TORQUE kmg		軸徑 SHAFT DIA mm	扭力 TORQUE kmg		軸徑 SHAFT DIA mm	扭力 TORQUE kmg		軸徑 SHAFT DIA mm	扭力 TORQUE kmg	
			50Hz	60Hz		50Hz	60Hz		50Hz	60Hz		50Hz	60Hz
0.20	0.25	11	0.07	0.06	11	0.13	0.11	-	-	-	-	-	-
0.40	0.50	14	0.13	0.11	14	0.25	0.21	19	0.39	0.32	-	-	-
0.75	1.00	19	0.24	0.20	19	0.49	0.41	24	0.73	0.61	28	0.98	0.82
1.50	2.00	24	0.49	0.41	24	0.97	0.81	28	1.50	1.20	28	1.90	1.60
2.20	3.00	24	0.71	0.59	28	1.40	1.20	28	2.10	1.80	38	2.90	2.40
3.70	5.00	28	1.20	1.00	28	2.40	2.00	38	3.60	3.00	38	4.80	4.00
5.50	7.50	38	1.80	1.50	38	3.60	3.00	38	5.40	4.50	42	7.10	5.90
7.50	10.00	38	2.40	2.00	38	4.90	4.10	42	7.30	6.10	42	9.70	8.10
11.0	15.00	42	3.60	3.00	42	7.10	6.00	42	10.70	8.90	48	14.30	11.90
15.00	20.00	42	4.90	4.10	42	9.70	8.10	48	14.60	12.20	55	19.50	16.20
18.50	25.00	42	6.00	5.00	48	12.00	10.00	55	18.00	15.00			
22.00	30.00	48	7.10	6.00	48	14.30	11.90	55	21.40	17.80			
30.00	40.00	55	9.70	8.10	55	19.50	16.20						

扭力換算表 Torque Calculation

A \ B	N cm	N m	Kg cm	Kg m
N cm	1	0.01	0.1	0.001
N m	100	1	10	0.1
Kg cm	10	0.1	1	0.01
Kg m	1000	10	100	1

鍵槽尺寸表 Key Ways List

	Stock Bores 標準孔徑 Ø D	Key Ways / 鍵槽尺寸		Key 鍵條
		b	t	
	10			
	11	4±0.02	1.8±0.1	4x4
	12			
	14			
	15	5±0.05	2.3±0.1	5x5
	16			
	18			
	19	6±0.02	2.8±0.1	6x6
	20			
	25	5±0.02	3.3±0.2	8x7

TSD MINI STAGE SERIES

微型滑台系列 !!

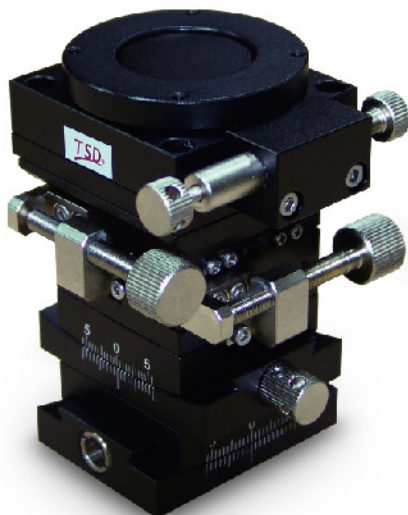
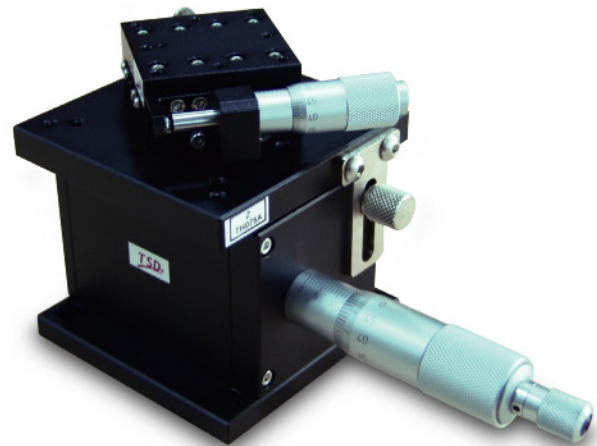
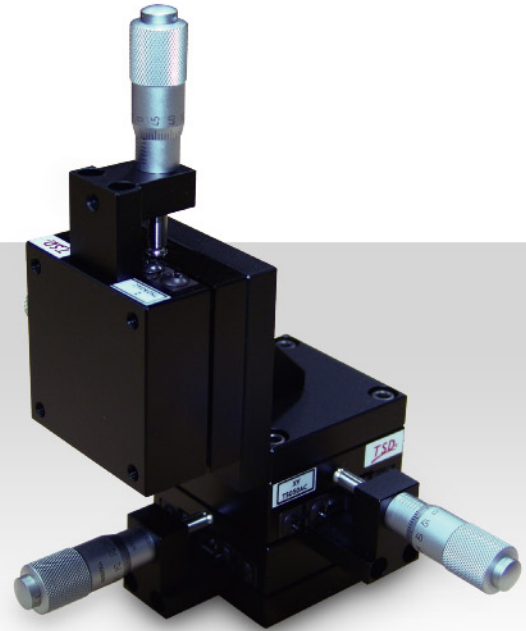
特 長

系統化設計、可多軸向量測變化搭配組合。

- > 移動方向 : X、XY、XYZ、 θ 、 α 、 β 等。
- > 台面尺寸 : 40 mm ~ 125 mm。
- > 微調量 : 0.01 mm(分釐卡)。
- > 直線精度 : 0.005 mm。
- > 耐荷重 : 0.4 kg ~ 10 kg。

用 途

- > 液晶面板製造設備、檢查裝置。
- > 半導體製造設備、檢查裝置。
- > 各式自動化量測檢查裝置。
- > 印刷電路板製造設備、檢查裝置。



TSD XYθ Mechanical Stage

XYθ 精密薄型滑台 !!

TRX-A series / TKX-S series

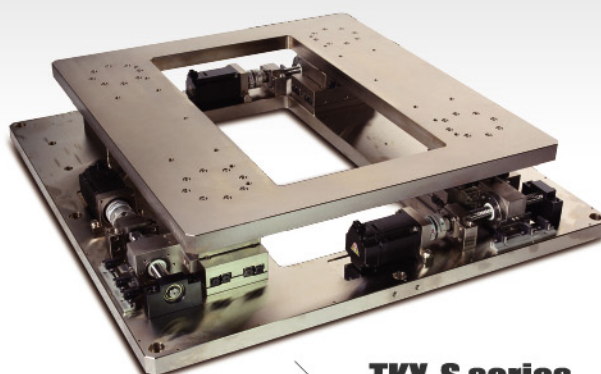
特 長

對應大型工件、中空結構、高剛性、高精度。

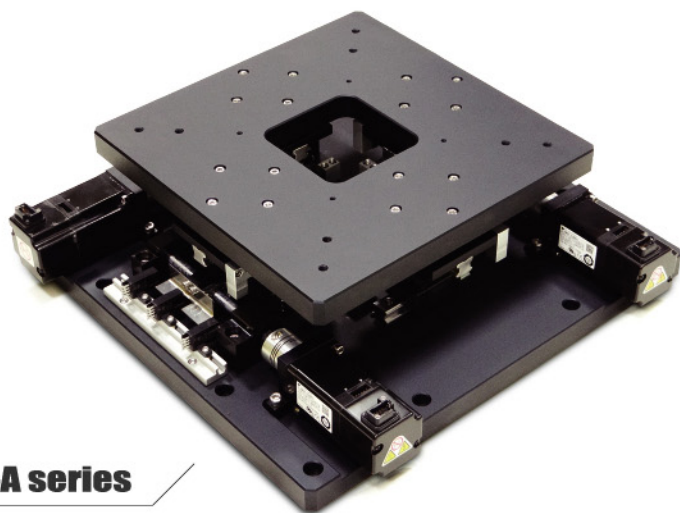
- > 工作尺寸：100 mm ~ 1500 mm
- > 反覆定位精度：±0.001 mm
- > 耐荷重：10 kg ~ 800 kg

用 途

- > 液晶面板製造設備、檢查裝置。
- > 半導體製造設備、檢查裝置。
- > 網板印刷機。
- > 印刷電路板製造設備、檢查裝置。



TKX-S series



TRX-A series



TA SUN GOOD ENTERPRISE CO.,LTD

<http://www.tsd.com.tw>

E-mail:mail@tsd.com.tw

Derler /

